



# GREEN MOUNTAIN RED ANGUS



*Annual  
Production Sale*

**Tuesday,  
March 15, 2022**

Lunch at 12 p.m. MDT

Sale at 1 p.m. MDT

GMRA Sale Facility • Logan, MT



**DVAuction**

Visit  
[www.gmracattle.com](http://www.gmracattle.com)





Welcome to Green Mountain **RED** Angus!

Welcome to our 23rd annual bull sale! What an amazing thing to be able to say. Not only is this our 23rd sale, but it is our 37th year selling quality Red Angus genetics.

We couldn't be more pleased to announce the marriage of our oldest son, Tom, to Katie (Harris) Morton. Tom is gradually moving into a more managerial position at Green Mountain Red Angus. Katie works part-time on the ranch and is invaluable in the office and as an AI tech. Jim graduated from MSU this past May, with a BA in photography, and continues to provide us with beautiful images of the ranching lifestyle. He has been on the ranch full-time since then and has become an essential member of the GMRA crew. It is very exciting to see this next generation so passionate about agriculture and the Red Angus breed in particular. We are so blessed to have the boys want to be an integral part of the ranch and look forward to many more years of quality Red Angus seedstock production.

This last year was a challenge for many producers with the drought that covered much of the country. We have also seen struggles with supply chains, from the labor force needed in packing plants, to the availability of trucks to move those supplies. We always try to keep our focus on the future and things that are happening in a positive way, especially in

the agricultural sector. One of our most trusted sources for news and projections is Clint Berry with Superior Livestock. He is on the forefront of many facets, from political positions within the industry, to owning cattle on feed, to purchasing and shipping feeder cattle.

According to Clint: The cattle market is heating up with nearly every indicator pointing toward great opportunities for higher cattle prices as we move into 2022 & beyond. With lower cattle numbers & all-time high beef demand in both the domestic & export markets, the leverage is swinging from the packing side back to the producer side of the supply/demand equation. While we face a lot of challenges outside the industry - Ukraine/Russia conflict, inflation, and possible government intrusions into our business, the fundamentals are certainly in our favor. Let's just pray for moisture where needed! Bull sale season is upon us and now is the time to evaluate your bull battery & identify areas for improvement in your herds' genetics. Balancing the need to reduce costs on the farm/ranch, while strategically improving our productivity & value to the buyer (post-weaning gain & carcass merit) is driven by the bulls we select & the females retained out of those sires. Invest in the upgrade & capture more profitability in the years to come.

As your trusted seedstock source we make every effort to provide our customers with not only breed-leading genetics, but data that is based on the most progressive and advanced collection methods we can. This includes DNA technology providing parent verification and genomically enhanced EPDs. We also turn in complete data collection and submission, beginning at BW and continuing through all personal performance data markers. Carcass ultrasound is performed, as is all reported phenotypic evaluations, and our own in-house evaluations.

As technology progresses, we are able to more readily identify the cattle that will excel in various facets of production, and here at GMRA we utilize everything we can to provide you with the most comprehensive and accurate data in the industry. The crew at Green Mountain Red Angus would like to thank you for putting your trust in our program for over 35 years. We hope you enjoy looking at the genetic packages offered in this catalog. Please reach out if you would like any additional information to help with your genetic selections. Stay well and we look forward to seeing you on sale day!

*Bob, Julie, Tom, Katie, Jim*



## ASSOCIATION REPRESENTATIVES:

Steve Koester, President..... Red Angus Assn. of America  
 Tony Ballinger, First Vice President ..... Red Angus Assn. of America  
 Tena Ketchum, MTRAA President ..... Montana Red Angus Assn.  
 Ryan Clark, MTRAA Vice President ..... Montana Red Angus Assn.

## AUCTIONEER:

Trent Stewart, Auctioneer ..... 541-325-3662

## GMRA INDUSTRY PARTNER:

Clint Berry, Seedstock Procurement  
 Superior Livestock ..... 417-844-1009

## SALE REPRESENTATIVES:

Nolan Woodruff, RAAA Commercial Marketing ..... 805-861-0996  
 John Goggins, Western Ag Reporter ..... 406-698-4159  
 Devin Murnin, Western Livestock Journal ..... 406-696-1502  
 Jeff Thomas, Prairie Star ..... 406-581-8859  
 Matt Wznick, Tri-State Livestock News ..... 406-489-2414  
 Superior Livestock ..... 800-422-2117  
 Jay Rost, DV Auction ..... 406-978-2124  
 Nate Smith, Top Dollar Angus ..... 620-546-4839

## PHONE NUMBERS:

Office ..... 406-285-6773  
 Bob's Cell ..... 406-580-0348  
 Tom's Cell ..... 406-209-6754  
 Jeremy Dunbar, Double D Red Angus ..... 406-580-6859

**View video of sale lots at**  
[www.gmracattle.com](http://www.gmracattle.com)

## ACCOMMODATIONS:

Broken Spur, Three Forks ..... 1-888-354-3048  
 Fort Three Forks Motel, Three Forks ..... 1-800-477-5690  
 Super 8, Belgrade ..... 1-800-800-8000  
 Holiday Inn Express, Belgrade ..... 1-800-542-6791  
 Sacajawea Hotel, Three Forks ..... 406-285-6515

Mention you are attending the Green Mountain Red Angus Bull Sale for a discount at the Sacajawea.

## LIVESTOCK INSURANCE:

Josh Boka, Mountainview Insurance  
 406-660-0532

## CATALOG & PROMOTION:

Cow Camp Promotions  
[www.cowcampromotions.com](http://www.cowcampromotions.com)



**Josh Boka**



**Auctioneer Trent Stewart**



**Clint Berry**



**Nolan Woodruff**



**John Goggins**



**Devin Murnin**



**Jeff Thomas**



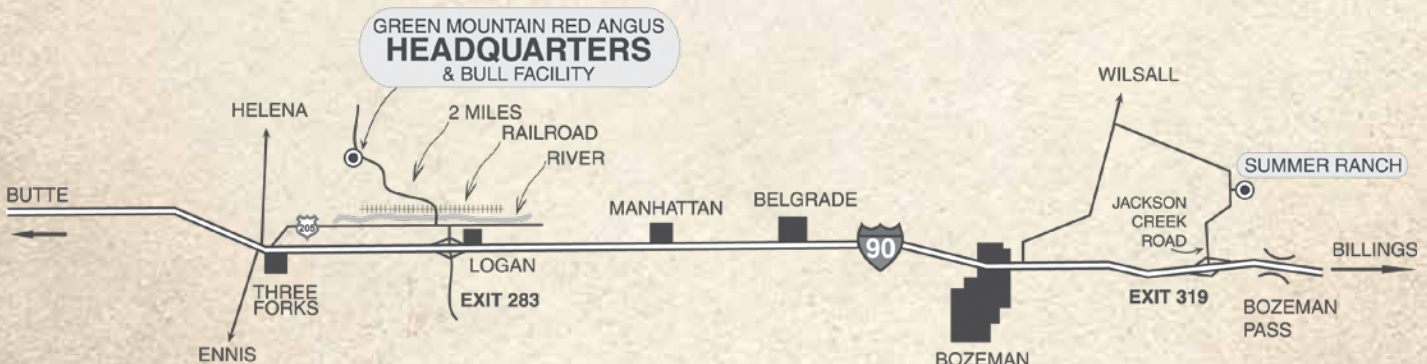
**Matt Wznick**



**Jay Rost**



**Nate Smith**



Get off 1-90 at the Logan Exit, #283. Go north and take a left on the frontage road. Proceed west toward Three Forks, about 1/2 mile. Take a right onto Logan Trident Road, heading north. The road immediately crosses the Gallatin River and the railroad tracks, as shown on the map. Green Mountain Red Angus is 2 miles from the railroad tracks. Watch for the large Green Mountain Red Angus sign.

The entire GMRA herd has undergone GGP-LD testing and have genomically enhanced EPDs and parent verification.



## **TERMS AND CONDITIONS**

1. The terms of the sale are cash unless prior arrangements have been made.
2. Each animal will be sold to the highest bidder. The person in charge will settle any disputes as to bids, and his decision on such matters shall be final.
3. Any announcement from the seller on sale day will take precedence over printed material.
4. Health certificates will be furnished for shipment anywhere in the United States.
5. Each animal becomes buyer's risk as soon as sold; but it shall be the obligation of the seller to see that animals are fed and cared for, free of charge to purchaser, until loaded for shipment or until the expiration of April 1st of the current year.
6. Retained Interest: Green Mountain Red Angus is retaining one-third revenue share interest in all bulls in the sale. We reserve the right to participate in the collection and marketing of semen. Buyers receive two-thirds interest, full possession and full salvage value. If seller wishes to collect semen for in-herd use only it will be at seller's expense and the buyer's convenience. If the buyer wishes to share in the collection costs and keep his share for in-herd use that is their choice.
7. All claims for adjustment or refund must be made in writing within six months of the sale date. In the event an animal is claimed to be a non-breeder, the Seller shall be entitled to six months' trial following the return of the animal in which to prove the animal is a breeder. If at the end of six months the Seller is unable to prove the animal is a breeder, restitution shall be made, in compliance with the terms set forth by the Red Angus Association of America. Any expenses incurred for transporting the animal shall be the buyer's responsibility.
8. Everyone attending this sale does so at their own risk. Owners, clerks or other helpers do not assume responsibility, legal or otherwise, for damages of any kind.
9. A certificate of registry and transfer will be furnished for each animal sold as a registered animal, after settlement has been made.
10. The above terms and conditions shall constitute a contract between the buyer and seller of each animal sold.

**These cattle do sell in accordance with the Sale Terms and Conditions  
set forth by the Red Angus Association of America.**

## **DVAuction** **Broadcasting Real-Time Auctions**

Watch and Bid Online at [DVAuction.com](http://DVAuction.com)

Can't make the sale?

We are pleased to bring you real-time Internet bidding and a live broadcast of this sale through DVAuction. To watch or bid online, simply complete the following steps:

- Visit the DVAuction web site at [www.dvauction.com](http://www.dvauction.com)
- Click on the "Creat New Account" tab
- Enter a user name, password and your contact information.
- Complete the Banking Information. (If you are only interested in viewing you can skip this section)
- Select your Time Zone, Accept the Terms and Conditions and click "Create Account"
- Complete the process by answering a few questions, selecting your subscription choices
- Click on "Apply for Bidding" in the upper left corner of your screen to select the sales you wish to bid on
- Be sure to include a personal contact at your bank, we will contact them in order to get a credit reference.
- If you would prefer to be approved using your credit card, call (402) 316-5460.
- Please be sure to apply for bidding at least a day in advance of the sale-every effort will be made to process your application in a timely manner.

DVAuction will contact you once you have been approved to bid. We do not provide buyer numbers until you have purchased a lot in the sale, and that number is only usable for that auction. After the sale contact the sale owner or manager to make arrangements for payment and delivery of your online purchases.

**Please Note:** High speed Internet access (DSL, T-1, or Broadband) is required to be able to bid successfully during the sale. If you have any questions, please contact DVAuction at (402) 316-5460 or email [support@dvauction.com](mailto:support@dvauction.com).

**Proxy Bidding:** If you can't access a computer during the sale, you can now place a "proxy bid" through DVAuction. Simply follow the instructions listed above, and as the sale date nears there will be a "Proxy Bidding" link under the sale listing on the main page of DVAuction. You can then place the maximum amount that you'd like to bid, and our system will represent your bid just as if you were there.





Reaching the World's **LARGEST** Buyer Base!



**SUPERIOR**  
Livestock Auction

**CLINT BERRY**  
417-844-1009

- 15-Plus Years Marketing Red Angus
- Specializing in Replacement Females
- Custom Seedstock Procurement

[www.superiorlivestock.com](http://www.superiorlivestock.com)



## HOW TO PARTICIPATE AS AN ABSENTEE BUYER

We have made preparations to bid and buy livestock through Superior Productions' "Call or Click-To-Bid" service for those unable to attend in person on sale day. Please note that all of the lots in the sale will also be available for viewing online prior to sale day at [www.superiorlivestock.com](http://www.superiorlivestock.com). "Call or Click-To-Bid" service for those unable to attend in person on sale day. **Please note that all of the lots in the sale will also be available for viewing online prior to sale day at [www.superiorlivestock.com](http://www.superiorlivestock.com).**

### HERE'S HOW IT WORKS

**Turn in Bids Over the Phone.** This is our traditional method of buying livestock. To get started simply go online to [www.superiorlivestock.com](http://www.superiorlivestock.com) and click on the tab titled "Register for a Buyer Number." Select the registration form for Superior Productions and print the registration form, fill it out and fax it in to Superior Productions at (817) 378-3380 with a signature on it, or scan and email the form to [info@superiorauction.com](mailto:info@superiorauction.com). You can also mail it in to the address provided on the form. Upon receipt of this information Superior will call you with a buyer's number and the bid line phone number that you will use on sale day to place bids over the phone..

**Click-To-Bid.** This is Superior's online bidding program for cattle buying. **PLEASE NOTE THAT HIGH SPEED INTERNET IS REQUIRED – THIS IS NOT FOR DIAL-UP OR SATELLITE INTERNET.** Registration is free, but you must become a member of [www.superiorclicktobid.com](http://www.superiorclicktobid.com) to sign up. Becoming a member is easy - just go to the homepage of [www.superiorclicktobid.com](http://www.superiorclicktobid.com) and follow the out-lined steps to get started. Input your information and select a username and password. You will receive an e-mail confirming you are a member. From that point forward you just have to sign in and select the sale you would like to register for and once approved you will receive an e-mail confirming which sale you are now registered for.

**Viewing the Auction.** There are two places to view the sale broadcast live on the internet: [www.superiorlivestock.com](http://www.superiorlivestock.com) or [www.superiorclicktobid.com](http://www.superiorclicktobid.com). Just go to the home page of either website and select the auction. If you just want to watch the auction on your computer, smartphone or tablet go to [www.superiorlivestock.com](http://www.superiorlivestock.com), but if you want to bid over the computer you must go to [www.superiorclicktobid.com](http://www.superiorclicktobid.com). Remember you can call in to bid on the internet, but you must be a member of [www.superiorclicktobid.com](http://www.superiorclicktobid.com) to "click-to-bid." Your computer must have Flash Media Player installed for this website to view the auction. If you have any questions, please call the Superior Productions office at 800-431-4452.

**\*If you plan to bid by phone through Superior Livestock or 'Click-to-Bid', you must register at [www.superiorlivestock.com](http://www.superiorlivestock.com) prior to bidding.**



# A-BAG-A-BULL



**RED ANGUS**  
RANCH TESTED. RANCHER TRUSTED.

If you purchase a bull from us, we will provide you with credit equal to the value of one bag of Feeder Calf Certification Program or Allied Access tags for each bull you purchase. To redeem your credit, bring your receipt for the tags to next year's sale and we will apply it to your bull purchase.

The FCCP provides age, source and genetic verification for calves sired by registered Red Angus bulls. Cattle enrolled in the FCCP are accepted into the exclusive Choice+ and G.O. Red grids. The FCCP 'yellow tags' are recognized by buyers nationwide and return a premium for Red Angus calves enrolled in the program.

The Allied Access program provides age and source verification for commercial cattlemen whose bull battery does not exclusively contain registered Red Angus bulls. Whether you are utilizing multiple sire breeds or halfblood bulls, enrolling in Allied Access demonstrates to buyers that you are taking an extra step in marketing your calves and adding value throughout the production chain.

To enroll in the FCCP or Allied Access, contact the Red Angus marketing department. Enrollment is simple and free of charge.

**RedAngus.org • 940-477-4593**

## Top Dollar Angus Feeder Calf Program



### Promote Your Verified Genetic Investment

Top Dollar Angus is the industry leader in third-party genetic verification and marketing assistance for superior Angus and Red Angus-based feeder cattle. Our program stamps a unique identity on the 'best of the best' by verifying and then showcasing their genetic merit. The Top Dollar Angus team works directly with a large number of feedyards and buyers to provide them with documented superior

feeder cattle, coupled with genetic risk mitigation and the precision understanding they need to pursue your cattle with absolute confidence.

Top Dollar Angus enables cow-calf producers to benefit from the genetic value already built into their herds. Producers that invest in high-end genetics, as well as strong health and nutrition programs, need a means of positively differentiating their calves from average cattle. Top Dollar Angus does that. Industry demand is strong for genetically superior feeder calves with the right supporting documentation. Don't make buyers guess, let them know by putting the Top Dollar Angus badge of honor on your premium genetic investment.



*Contact our team for more  
information and a free evaluation:*



[www.topdollarangus.com](http://www.topdollarangus.com)

**Nate Smith**, General Manager • (620) 546-4839 • [nate@topdollarangus.com](mailto:nate@topdollarangus.com)

**Kaytlin Hokanson** • (307) 461-7687 • [kaytlin@topdollarangus.com](mailto:kaytlin@topdollarangus.com)

**Jake Feddes** • (406) 581-8157 • [jake@topdollarangus.com](mailto:jake@topdollarangus.com)

**Jim Akers** • (859) 361-4221 • [akersjim@bellsouth.net](mailto:akersjim@bellsouth.net)

**Jason Gagnon** • (559) 723-6362 • [jason@topdollarangus.com](mailto:jason@topdollarangus.com)

**Andy Albrecht** • (402) 922-1000 • [andy@topdollarangus.com](mailto:andy@topdollarangus.com)



## DELIVERY ARRANGEMENTS & PRICING

Organization of trucking is more challenging than ever and we appreciate your understanding of our delivery policy and look forward to working with you to ensure the most effective means of transfer of ownership. Delivery arrangements and pricing are outlined below, and we encourage you to review. Please visit with Bob or Tom prior to leaving the sale if you have questions. One of them will be in contact with you within a week of the sale to coordinate delivery.

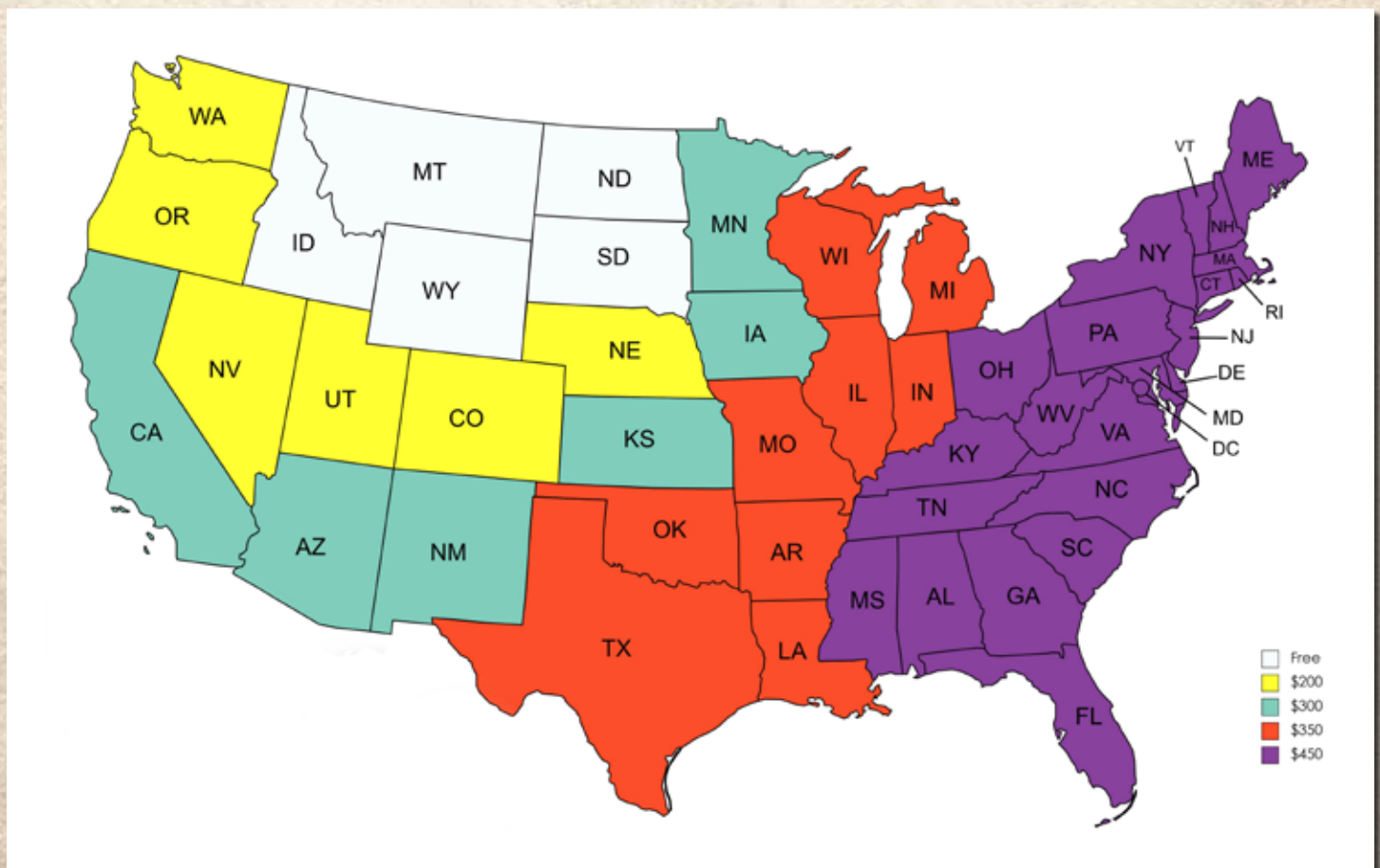
### DELIVERY PRICING

We will offer **FREE DELIVERY TO CENTRAL POINTS** in Montana, Idaho, North Dakota, South Dakota & Wyoming. For all other states, delivery will be charged to **CENTRAL POINTS** on a per-head basis on the pricing outlined on the map below. **Pricing will be charged based on your physical address.** Delivery charges will be added to each invoice at check out, unless you plan to load out within 7 days of the sale.

### CENTRAL POINTS

All delivery will be organized to **CENTRAL POINTS** within the state. Delivery WILL NOT be organized to your home or ranch. Loads are delivered by semi-truck and require drop off points along their route with a loading chute and location to house livestock. You are expected to meet the semi-truck driver at the central drop-off point as communicated by them. Central points for delivery include auction barns, vet clinics and other locations determined by the semi-truck driver at the time of delivery. Pricing to these central points will be charged to you based on your physical address. The driver will be given your contact information and will communicate with you regarding the drop-off time and location.

Thank you for your cooperation in arranging delivery dates and the pick up of your cattle at central delivery points within your state. This will keep the cattle from being on the semi-truck longer than necessary and will help to get your animals to you with the least possible stress and in the best possible condition. Please let us know if you have any questions.





*Proven performance*

**in the breeding pasture, on the grid and on the rail!**

Green Mountain Red Angus customers are realizing top performance and profitability through FCCP, Top Dollar and multiple value added programs!



"Only the most genetically capable cattle have the ability to produce carcasses that meet the Grid Master requirements, making this an exceptionally prestigious award."



In Recognition of Outstanding Carcass Achievements presented to:

**Green Mountain Red Angus**

On July 30, 2020 at the Superior Video Royale for Outstanding Achievements produced with Red Angus Genetics and Marketed through the Red Angus Exclusive Grid.

Feed Yard: Darr Feedlot - Conrad, NE  
Producer: Circle Pi Ranch - Managed By Troy Olson

Harvest Date	Number of Head	% Choice	% Prime or Premium Products	% YG 1's and 2's	% YG 4's & 5's	Grid Score
7/6/2020	89	95.5%	42.7%	52%	10%	113

- The prestigious Grid Master was awarded to Circle Pi Ranch and Troy Olson, fed by Allied Feeding Partners of which Green Mountain Red Angus is a shareholder, and all cattle fed were single-source genetics from GMRA.
- Circle Pi & Troy have purchased 110 GMRA bulls since 2008 and GMRA is their only genetic source.
- Circle Pi & Troy are Top Dollar Angus customers and 75% of GMRA bulls sold every year qualify for Top Dollar Angus.



Bob, Julie & Jim Morton • Tom & Katie Morton  
2431 Logan Trident Road • Three Forks, MT 59752  
(406) 580-0348 • [www.gmracattle.com](http://www.gmracattle.com)



Visit ... [www.gmracattle.com](http://www.gmracattle.com)  
for more information and to request your sale catalog

Like us on Facebook!



*Annual Production Sale*  
**Tuesday, March 15, 2022**

GMRA Sale Facility • Logan, MT





**Bob Morton,  
Ranch Owner, Manager**  
In charge of all ranch  
duties from calving and  
AI'ing to fencing, haying  
and feeding



**Julie Morton,  
Ranch Owner,  
Office Manager**  
Handles all cattle  
records, bookkeeping,  
and manages sales



**Tom Morton, Herdsman**  
All ranch duties  
including feeding and  
breeding programs,  
specializing in welding  
and mechanics



**Katie Harris**  
Part-time ranch  
and office help,  
AI tech and  
head bartender



**Jim Morton,  
Crop Manager**  
Head Photographer,  
night calver, fencer,  
specializing in hay  
production



**Laney, Jeremy, JD and Sutton Dunbar,  
Double D Red Angus,**  
Owners of all DDRA lots in this sale



**Barb Terland**  
Julie's sister and  
office help on  
sale day



**Rusty Terland**  
Julie's brother-in-law  
and all-around  
sale day help



**Dwight Ashcraft**  
Head fence builder  
and all-around good  
day help



**Daisy**  
Head of cattle movement  
and corral boss



**Dick & Dan**  
In charge of heavy pulling, feeding,  
stacking hay and Christmas Cheer



**Clint Berry**  
Industry partner and off-  
site bull procurement  
for absentee buyers



**Delaney Dougherty**  
Office help and  
photographer



**Doc**  
Best  
4-wheeler  
companion  
ever



**Luke**  
Pasture  
boss &  
ear tag  
deliveries

*Thank you for all your hard  
work at Green Mountain  
Red Angus throughout the year!*





Lot 1

### GMRA INVESTMENT 1217J

Birth Date: 1/13/21 Reg. # 4465011 Category: 100% 1A



PIE STOCKMAN 4051  
**BIEBER CL STOCKMARKET E119**  
BIEBER CL ADELLE 475C  
HXC DECLARATION 5504C  
**GMRA LARKABA 984G**  
GMRA LARKABA 313

LSF SAGA 1040Y  
PIE LAKOTA 046  
ANDRAS FUSION R236  
BIEBER ADELLE 297Y  
LEACHMAN PLEDGE A282Z  
HXC190Y  
GMRA PEACEMAKER 1216  
GMRA LARKABA 156

BW	74
WW	665
WW-R	122
YW	1233
YW-R	119
IMF	4.70
REA	11.6
SC	40

ProS	HB	GM
163	86	77
1%	4%	1%

CED	BW	WW	YW	ADG	DMI	M	ME	HPG	CEM	ST	MARB	YG	CW	REA	FAT
13	-2.0	94	155	0.38	2.16	27	12	10	10	20	0.96	0.16	41	0.23	0.04
42%	46%	1%	1%	1%	98%	28%	93%	75%	9%	4%	1%	92%	4%	26%	91%

This bull will be the best Investment you make this year. The more you look at the personal performance statistics, number profile, phenotype and pedigree the better it gets. Birthweight is moderate. WR and YR are both #2 in the class. Actual and adjusted YW are both #2. ADG is #4 and ADG ratio is tied for #4. WDA ratio is #2. Actual and adjusted IMF scans are both #4. 10 of his EPDs are in single digit percentiles, including all indices and growth while CED and BW stay in the top half of the breed. His ProS, YW and ADG are tied for #1, while he posts the #2 WW and #4 Marb. He has check-marked ALL the boxes! Now things get interesting. His performance has given his first calf heifer dam a 109 MPPA. She is set to follow in the footsteps of a very impressive maternal pedigree, featuring top-notch MPPAs all the way to 106, going back to a 1957-born dam. Going back in time you find a 3-digit registration number, then registration #95, who was out of Larkspur, Red Angus bull, registration #1, and then on to a Foundation Angus female. There is just nothing stronger than a pedigree that proves out the performance in such dynamic style. Comments at evaluation time, prior to finding all of the power-data, were: very nice, very straight top, very clean sheath, clean fronted, beautiful bull. He ranked above average on all phenotypic marks from length to capacity to thickness. He scored 5's across the board, which is ideal for all feet and leg scores. Investment will be used in the GMRA breeding program.



Lot 2

### GMRA DAMASCUS 1226J

Birth Date: 1/15/21 Reg. # 4465037 Category: 100% 1A



FEDDES SILVER BOW B226  
**FEDDES BRUNSWICK D202**  
FEDDES LARKABU X21  
BROWN-CH INDEPENDENCE D5670  
**GMRA INDIGO 963G**  
GMRA INDIGO 661

BROWN JYJ REDEMPTION Y1334  
FEDDES LAKINA Y17  
FEDDES BIG SKY R9  
FEDDES LARKABU 827  
5L INDEPENDENCE 560-298Y  
CH PRILARK 3063  
ANDRAS NEW DIRECTION R240  
GMRA INDIGO 424

BW	63
WW	659
WW-R	121
YW	1085
YW-R	105
IMF	2.37
REA	13.0
SC	38

ProS	HB	GM
135	77	58
3%	9%	11%

CED	BW	WW	YW	ADG	DMI	M	ME	HPG	CEM	ST	MARB	YG	CW	REA	FAT
18	-3.2	75	123	0.30	2.41	32	10	13	10	18	0.58	-0.23	35	0.98	-0.01
2%	24%	6%	6%	8%	99%	4%	87%	19%	6%	14%	16%	1%	11%	1%	7%

This moderate-framed bull catches your eye the minute you walk in the pen. He is clean fronted and smooth built with extra capacity and a powerful rear quarter. His personal performance is second-to-none on a true calving ease bull with a WR that is tied for #3 in the class. REA scan is excellent with the #3 ratio and the #5 actual and adjusted measurements and the #1 REA EPD. Damascus is a true curve bender with all but 3 numbers in the top 19% of the breed or higher and all but 2 in the top 25%. YG is simply outstanding and sits at #1 in the class. You find a breed-leading group of indices backed up by tremendous calving ease, performance, carcass and maternal. His dam is a first calf heifer posting an MPPA of 108 and is backed up by generations of performance-minded females. This bull hits all the marks and will move into any herd and complement existing phenotype and genotype. We will be plugging this bull in to our AI program





Lot 3

**GMRA BONANZA 1205J**Birth Date:  
1/8/21Reg. #  
4464953Category:  
100% 1A

FEDDES SILVER BOW B226  
**FEDDES BRUNSWICK D202**  
 FEDDES LARKABU X21  
 BROWN-CH INDEPENDENCE D5670  
**GMRA LAKOTA 986G**  
 GMRA LAKOTA 378

BROWN JYJ REDEMPTION Y1334  
 FEDDES LAKINA Y17  
 FEDDES BIG SKY R9  
 FEDDES LARKABU 827  
 5L INDEPENDENCE 560-298Y  
 CH PRILARK 3063  
 HXC CONQUEST 4405P  
 GMRA LAKOTA 646

BW	74
WW	680
WW-R	124
YW	1274
YW-R	123
IMF	3.69
REA	11.5
SC	37

ProS	HB	GM
113	45	68

CED	BW	WW	YW	ADG	DMI	M	ME	HPG	CEM	ST	MARB	YG	CW	REA	FAT
12	-1.5	82	142	0.37	2.27	33	12	11	6	15	0.69	-0.05	33	0.51	0.00
63%	56%	1%	1%	1%	99%	2%	93%	48%	79%	49%	6%	6%	15%	3%	23%

This is one impressive Brunswick son out of a numbered-up calving ease and growth dam. There is so much powerful performance here, but you need to remember that his birth weight is a moderate 74#. He posts the #1 WR, #3 adjusted WW, #1 YR and actual and adjusted YW, #1 ADG ratio and actual ADG, #1 WDA ratio and #3 actual WDA. All carcass scan ratios are 103 or higher. Bonanza profiles tremendous growth and outstanding carcass all the way across the board, from personal performance to his number profile. EPD package is top-notch with 8 in the top 7% of the breed or higher. His YW EPD is tied for #5 in the offering, and Milk an ADG are tied for #4. He is out of a tremendous first-calf heifer doing things right at GMRA. She posts a 110 MPPA and is following in the footsteps of a highly performance-minded cow family with generations of MPPAs 100 or higher. Bonanza is put together nicely with abundant capacity and depth of rib with an exceptional set of feet and leg scores to match.



Lot 4

**GMRA RED CHROME 1307J**Birth Date:  
2/9/21Reg. #  
4465307Category:  
100% 1A

FEDDES SILVER BOW B226  
**FEDDES BRUNSWICK D202**  
 FEDDES LARKABU X21  
 GMRA PEACEMAKER 1216  
**GMRA PAMELA 546**  
 GMRA PAMELA 762

BROWN JYJ REDEMPTION Y1334  
 FEDDES LAKINA Y17  
 FEDDES BIG SKY R9  
 FEDDES LARKABU 827  
 FRITZ JUSTICE 8013  
 GMRA THELMA 930  
 MLK CRK TITLEIST 4158  
 GMRA PAMELA 042

BW	74
WW	651
WW-R	113
YW	1145
YW-R	108
IMF	3.64
REA	11.5
SC	37

ProS	HB	GM
132	73	58
4%	13%	10%

CED	BW	WW	YW	ADG	DMI	M	ME	HPG	CEM	ST	MARB	YG	CW	REA	FAT
15	-3.7	69	111	0.26	2.36	31	12	8	9	20	0.73	0.02	38	0.57	0.03
21%	17%	18%	19%	25%	99%	7%	93%	92%	13%	3%	4%	26%	7%	2%	82%

Here's one of the younger bulls in the pen, but he catches your eye every time. His phenotype shows a nice broad top with extra capacity and thickness. His nice, moderate birth led into simply outstanding growth and performance. All growth ratios are over 102 and his WDA is at 109 with the actual gain at #4 in the class. EPDs are strong with a big birth to growth spread and great carcass. All 3 indices rank in the top 20% of the breed. His dam has the 2nd highest MPPA of the GMRA mature cow herd with a 110 on 5 calves. Her birth ratio is below average and she has an average WR of 113 with nothing under 105, and average YR of 105 with nothing under 101. This bull will compliment any program, starting in the heifer pen, and be able to move right into the mature cow herd and provide performance at all levels.





Lot 5

### GMRA FORGED 1231J

Birth Date: 1/16/21 Reg. # 4465053 Category: 100% 1A



FEDDES SILVER BOW B226  
FEDDES BRUNSWICK D202  
FEDDES LARKABU X21  
GMRA TESLA 6214  
GMRA MESA MAID 991G  
GMRA MESA MAID 7110

BROWN JYJ REDEMPTION Y1334  
FEDDES LAKINA Y17  
FEDDES BIG SKY R9  
FEDDES LARKABU 827  
GMRA TRILOGY 0226  
GMRA ANGIE ROSE 448  
FEDDES BOBCAT A230  
GMRA MESA MAID 475

BW	82
WW	622
WW-R	114
YW	1167
YW-R	113
IMF	2.66
REA	11.3
SC	34

ProS	HB	GM
147	81	66
1%	7%	5%

CED	BW	WW	YW	ADG	DMI	M	ME	HPG	CEM	ST	MARB	YG	CW	REA	FAT
12	1.3	85	143	0.36	2.37	32	17	12	8	20	0.58	-0.01	46	0.54	0.00
61%	94%	1%	1%	1%	99%	5%	99%	34%	21%	3%	16%	14%	2%	2%	21%

There is so much performance here that you really need to study the numbers to realize how powerful Forged is. The moderate birth weight leads to a top WR and he just kept going, turning in the #3 YR of the offering. ADG sits at 111 and WDA is 110, which is tied for #5. This proves out breed-leading growth EPDs that all sit in the top 1% of the breed and a YW that is tied for #5 in the class. Every carcass EPD is in the top 20% and maternal numbers are simply outstanding. His dam is a well-made first-calf heifer that posts an MPPA of 106. The pedigree is a who's who of the Mesa Maid cow family with lineage MPPAs of 102, 106, 101 and 109. When doing phenotypic evaluations, the first word that was written down was 'tank.' He's built right and has the personal power and number package to go far. Best of all the final note on evaluations – very calm, nice disposition.



Lot 6

### GMRA CAPITAL GAINS 1211J

Birth Date: 1/11/21 Reg. # 4464985 Category: 100% 1A

PIE STOCKMAN 4051  
BIEBER CL STOCKMARKET E119  
BIEBER CL ADELLE 475C  
H2R PROFITBUILDER B403  
GMRA NEXA 932G  
GMRA NEXA 901

LSF SAGA 1040Y  
PIE LAKOTA 046  
ANDRAS FUSION R236  
BIEBER ADELLE 297Y  
LSF TAKEOVER 9943W  
BROWN MS P707 Y6674  
LAUBACH EXPEDITION 643  
GMRA NEXA 553

BW	66
WW	673
WW-R	
YW	1214
YW-R	
IMF	3.70
REA	12.9
SC	36

ProS	HB	GM
129	58	71
5%	38%	3%

CED	BW	WW	YW	ADG	DMI	M	ME	HPG	CEM	ST	MARB	YG	CW	REA	FAT
12	-0.9	82	141	0.36	1.60	24	4	10	9	14	0.81	0.02	22	0.33	0.03
54%	67%	1%	1%	1%	69%	61%	59%	62%	11%	65%	2%	25%	54%	12%	72%

This bull's dam didn't make it through the spring and he was raised as a graft, so you won't see any ratios. He features super calving ease yet turned in the #4 adjusted WW and actual YW and #3 adjusted YW, which would have given him growth ratios at the top of the class. Likewise, his carcass scans were excellent and ratios for both IMF and REA would have been in the 110 range. His EPDs tell the rest of the story with WW, YW and ADG in the top 1% of the breed, Marb at 2% and REA at 12% with a GM at 3%. He features moderate birth weight, high growth and outstanding carcass all in one package. He's solid front to back with above average phenotypic ratings and a great disposition.





Lot 7

**GMRA CINCH 1216J**Birth Date:  
1/13/21Reg. #  
4465009Category:  
100% 1A

GMRA TRILOGY 0226  
**GMRA TESLA 6214**  
 GMRA ANGIE ROSE 448  
 GMRA ABSOLUTION 6201  
**GMRA OPHELIA 925G**  
 GMRA OPHELIA 783

MESSMER PACKER S008  
 GMRA LAKOTA 625  
 GMRA PEACEMAKER 1216  
 GMRA ANGIE ROSE 967  
 BROWN JYJ REDEMPTION Y1334  
 GMRA JUANA 4100  
 BECKTON EPIC R397 K  
 GMRA OPHELIA 728

BW	54
WW	580
WW-R	106
YW	1038
YW-R	100
IMF	4.50
REA	10.1
SC	35

ProS	HB	GM
153	88	65

1%	3%	5%
CED	BW	WW
15	-5.6	60
95	0.22	1.82
35	10	12
11	20	0.72
0.10	41	0.38
0.03		

This Tesla son is a clean-made, attractive bull with great thickness and capacity. He is a heifer bull supreme who kept an eye on performance. His marbling carcass scan is simply outstanding with the #5 actual and adjusted measurements in the offering. He is numbered-up with 10 EPDs in the top 8% or higher, and all indices in the top 6% or higher. Calving ease and maternal numbers are on the leader board and he features the #1 Milk in the offering. His dam is a member of the high-performance Ophelia family.



Lot 8

**GMRA TETON RED 1284J**Birth Date:  
1/28/21Reg. #  
4465237Category:  
100% 1A

H2R PROFITBUILDER B403  
**GMRA GAME CHANGER 8270F**  
 GMRA PRIDSTOM 069  
 FRITZ JUSTICE 8013  
**GMRA LAKOTA 474**  
 GMRA LAKOTA 822

LSF TAKEOVER 9943W  
 BROWN MS P707 Y6674  
 GMRA LARAMIE 5110  
 GMRA PRIDSTOM 727  
 VGV JUSTICE 614  
 FRITZ CHRIS 6047  
 BASIN HOB0 79E  
 GMRA LAKOTA 527

BW	96
WW	664
WW-R	115
YW	1189
YW-R	112
IMF	1.97
REA	13.3
SC	38

ProS	HB	GM
115	53	62

13%	48%	8%
CED	BW	WW
10	0.7	89
149	0.38	2.12
32	12	9
7	16	0.56
0.05	41	0.43
0.02		

This bull was born with performance on his mind. His actual WW ranks as #5 in the offering while his YR is tied for #4, and his actual YW sits at #3. ADG and WDA are top-notch with the #2 WDA. His REA scan turned in the #2 REA ratio and adjusted scan. The numbers don't lie with all growth markers at the top of the breed. WW EPD is tied for #3, his YW is #3 and ADG is tied for #1. Carcass follows suit and validates a GM in the top 6%. His dam has always had high-end progeny with an MPPA of 106 on 6. Teton Red is built right with outstanding evaluations. Extra length and thickness compliment a big, broad top and a wide chest floor with tons of capacity and depth from top to bottom. Feet and leg evaluations are ideal with all scores at 5. He has a super disposition and stays calm and collected.





Lot 9

9

### GMRA GAME CHANGER 1260J

Birth Date: 1/23/21 Reg. # 4465153 Category: 100% 1A

H2R PROFITBUILDER B403  
GMRA GAME CHANGER 8270F  
GMRA PRIDSTOM 069  
BROWN JYJ REDEMPTION Y1334

LSF TAKEOVER 9943W  
BROWN MS P707 Y6674  
GMRA LARAMIE 5110  
GMRA PRIDSTOM 727  
BECKTON NEBULA P P707  
JYJ MS JOLENE W16  
GMRA PEACEMAKER 1216  
GMRA JUANA 219

ProS	HB	GM
146	65	81
1%	26%	1%

BW	71
WW	655
WW-R	114
YW	1145
YW-R	108
IMF	4.39
REA	11.6
SC	34

CED	BW	WW	YW	ADG	DMI	M	ME	HPG	CEM	ST	MARB	YG	CW	REA	FAT
13	-1.1	84	137	0.33	2.29	29	12	11	8	18	0.93	0.09	48	0.29	0.01
45%	64%	1%	1%	2%	99%	15%	94%	56%	35%	19%	1%	63%	1%	17%	29%

This Game Changer son posts a nice moderate birth weight and kept an eye toward performance. Every measurable growth trait posts a ratio over 100 all the way to 114. Every ultrasound scan also ratioed extremely well, ranging from 104 to 139. He is numbered-up with 6 EPDs in the top 1%, including all growth, and an ADG at 2%. His GM is tied for #3 in the class, Marb is tied for #4 and CW is tied for #5. He's all about power and performance and comes from a long line of performance-minded females. There are 8 lineal maternal generations of MPPAs over 100, going back almost 40 years. Phenotype shows above average length, capacity and tremendous thickness in the rear quarter.



Lot 10

10

### DDRA GAME CHANGER 106

Birth Date: 1/10/21 Reg. # 4461153 Category: 100% 1A

H2R PROFITBUILDER B403  
GMRA GAME CHANGER 8270F  
GMRA PRIDSTOM 069  
DDRA TRIGGER 7004

LSF TAKEOVER 9943W  
BROWN MS P707 Y6674  
GMRA LARAMIE 5110  
GMRA PRIDSTOM 727  
GMRA TRIGGER 4248  
DDRA MONA 2007  
GMRA MINOTAURO 3104  
DKK DAZZLE R71

ProS	HB	GM
102	38	64
28%	78%	6%

BW	91
WW	670
WW-R	117
YW	1207
YW-R	112
IMF	2.89
REA	10.4
SC	35

CED	BW	WW	YW	ADG	DMI	M	ME	HPG	CEM	ST	MARB	YG	CW	REA	FAT
10	1.7	87	143	0.35	2.04	31	15	11	8	13	0.50	0.12	54	0.34	0.02
79%	96%	1%	1%	1%	95%	6%	98%	48%	33%	75%	28%	80%	1%	12%	47%

What an outstanding bull from a first-calf heifer! If you want big, growthy calves with excellent carcass you better be looking at this bull. GM is at the top 5%. WW, YW, ADG, and CW all in the top 1% of the Red Angus breed. Additionally, he has an IMF ratio of 101. Simply put front to back, top to bottom, he is correct in style and structure.



Lot 11

11

### GMRA EXCELLENCE 1201J

Birth Date: 1/2/21 Reg. # 4464933 Category: 100% 1A

LJC MERLIN 937Z  
KCC EXCELLENCE 139-774  
139 1KCC  
FEDDES BRUNSWICK D202

LJC MERLIN T179  
TR CARRIE WT937  
SCHULER ENVY 7342T  
KCC MISS BV 2105-528  
FEDDES SILVER BOW 8226  
FEDDES LARKABU X21  
BIEBER ROOSEVELT W384  
GMRA ANGIE ROSE 9116

ProS	HB	GM
110	52	59
18%	52%	10%

BW	63
WW	581
WW-R	106
YW	1121
YW-R	108
IMF	2.81
REA	12.6
SC	36

CED	BW	WW	YW	ADG	DMI	M	ME	HPG	CEM	ST	MARB	YG	CW	REA	FAT
19	-1.9	77	129	0.32	1.80	29	4	11	11	13	0.43	-0.09	37	0.75	0.01
2%	48%	4%	3%	3%	85%	18%	58%	44%	1%	81%	43%	3%	9%	1%	36%

This was the first bull to hit the ground in 2021 and once he did, he never looked back. Birthweight was low and he excelled at growth with all performance ratios well over 100. He balances calving ease with outstanding growth numbers and compliments that with a great set of carcass numbers. Overall, over half of his EPDs are in the top 25% of the breed or higher, with the #2 REA EPD in the offering, as well as a tie for the #4 CED, and the #5 YG. His dam, a first-calf heifer, posts an MPPA of 102. Here is a nice, moderate-framed bull with a super broad top leading to excellent depth and capacity and a perfect set of foot and leg structure scores.

View a sortable Excel spreadsheet and videos at [www.gmracattle.com](http://www.gmracattle.com).





Lot 12

top 6% or higher. He features the #2 CED and #4 BW in the offering and has a CEM and Marb tied for #4. Money Market is super maternal, growthy, with incredibly low birth. Add in the first-calf heifer with a 103 MPPA who is the result of the high-performance Lakota cow family, going back to GMRA Lakota 527 with a 112 MPPA on multiple progeny, and the sky is the limit.

12

## GMRA MONEY MARKET 1212J

Birth Date:  
1/11/21Reg. #  
4464987Category:  
100% 1A

PIE STOCKMAN 4051  
BIEBER CL STOCKMARKET E119  
BIEBER CL ADELLE 475C

BROWN-CH INDEPENDENCE D5670

GMRA LAKOTA 952G

GMRA LAKOTA 645D

LSF SAGA 1040Y  
PIE LAKOTA 046  
ANDRAS FUSION R236  
BIEBER ADELLE 297Y  
SL INDEPENDENCE 560-298Y  
CH PRILARK 3063  
ANDRAS NEW DIRECTION R240  
GMRA LAKOTA 314A

ProS	HB	GM
155	90	66
1%	3%	5%

BW	48
WW	591
WW-R	108
YW	1086
YW-R	105
IMF	4.23
REA	11.9
SC	38

CED	BW	WW	YW	ADG	DMI	M	ME	HPG	CEM	ST	MARB	YG	CW	REA	FAT
20	-6.5	64	111	0.29	1.71	28	4	12	11	20	0.92	0.15	20	0.08	0.05
1%	1%	33%	19%	9%	79%	22%	58%	35%	1%	5%	1%	90%	61%	59%	97%

Have you ever seen a birth weight this low in the GMRA bull sale catalog? Never... and when he hit the ground, we were pretty sure this one wouldn't be in there either. Then he started to grow... and he kept growing! All of this bull's performance ratios are over 101 on up to a 108 WR, and carcass scans are well above 100 all the way up to 128. The EPD profile is second-to-none with 5 numbers in the top 1% of the breed with an emphasis on calving ease, carcass and maternal. All indices are

13

## GMRA TESLA 1220J

Birth Date:  
1/13/21Reg. #  
4465017Category:  
100% 1A

GMRA TRILOGY 0226

GMRA TESLA 6214

GMRA ANGIE ROSE 448

FEDDES BRUNSWICK D202

GMRA ESTONIA 909G

GMRA ESTONIA 705

MESSMER PACKER S008  
GMRA LAKOTA 625  
GMRA PEACEMAKER 1216  
GMRA ANGIE ROSE 967  
FEDDES SILVER BOW B226  
FEDDES LARKABU X21  
BROWN JYJ REDEMPTION Y1334  
GMRA ESTONIA 581

ProS	HB	GM
115	78	37
13%	9%	48%

BW	66
WW	602
WW-R	110
YW	1059
YW-R	102
IMF	4.03
REA	11.3
SC	36

CED	BW	WW	YW	ADG	DMI	M	ME	HPG	CEM	ST	MARB	YG	CW	REA	FAT
16	-3.9	65	104	0.25	2.24	34	15	14	11	19	0.59	0.07	25	0.35	0.05
14%	15%	31%	31%	33%	99%	1%	97%	12%	2%	11%	14%	51%	42%	11%	94%

There is plenty of power in this calving ease Tesla son. His nice low birthweight is backed up by top of the breed birth numbers and his impressive weaning ratio verifies growth numbers in the top 1/3 of the breed or higher and carcass is strong. A well-rounded bull with the #2 milk EPD in the offering out of a first calf heifer posting a 104 MPPA and a granddam posting a 107. Feet and leg structure scores were ideal across the board.

14

## DDRA TRANSPORTER 142

Birth Date:  
2/4/21Reg. #  
4461079Category:  
100% 1A

LSF MEW X-PORTER 6695D

SUTH TRANSPORTER 60G

SUTH CONCHETTA 5057

GMRA GARRETT 4264

DDRA LADY ELEANOR 6006

DDRA LADY ELEANOR 4015

REDHILL TEN X 104U 190A  
BROWN MS NEW STANDARD A7053  
SRR GRAND OSCAR 105  
SUTH MIMI'S CONCHETTA 2012  
FRITZ JUSTICE 8013  
LGR ESTONIA 7102  
GMRA STETSON 2240  
DDRA LADY ELEANOR 0014

ProS	HB	GM
58	22	37
92%	95%	50%

BW	89
WW	705
WW-R	117
YW	1149
YW-R	109
IMF	2.64
REA	11.8
SC	40

CED	BW	WW	YW	ADG	DMI	M	ME	HPG	CEM	ST	MARB	YG	CW	REA	FAT
9	0.3	78	118	0.25	1.51	32	10	9	6	12	0.37	0.03	33	0.38	0.02
92%	86%	4%	10%	30%	60%	5%	89%	86%	66%	87%	60%	28%	16%	8%	54%

This bull's dam knows all about performance, with an MPPA of 107 on 3 calves, and this bull is no exception. He has always been a standout in the DDRA 2021 calf crop. He defines power, starting out a strong 89# and just continued to grow. He has a WR of 117 that ties him for #5 in the offering, is the #3 for actual WW of 684# and has the #1 adjusted WW at 705#. He finished with a YR of 109 that led to a 110 WDA ratio that is also tied for #5. Phenotypically he is thick, with a smooth top line and very clean head and front end. You just cannot help but like the look of this bull!



Lot 14





Lot 15

15

### GMRA STOCKMARKET 1203J

Birth Date: 1/7/21 Reg. # 4464945 Category: 100% 1A

PIE STOCKMAN 4051  
**BIEBER CL STOCKMARKET E119**  
BIEBER CL ADELLE 475C  
FEDDES BRUNSWICK D202

**LGR VENICE 947G**  
LGR VENICE 589

LSF SAGA 1040Y  
PIE LAKOTA 046  
ANDRAS FUSION R236  
BIEBER ADELLE 297Y  
FEDDES SILVER BOW B226  
FEDDES LARKABU X21  
GMRA TRILOGY 0226  
LGR VENICE 795



BW	75
WW	611
WW-R	112
YW	1116
YW-R	108
IMF	3.47
REA	12.2
SC	37

ProS	HB	GM
132	61	71
4%	33%	3%

CED	BW	WW	YW	ADG	DMI	M	ME	HPG	CEM	ST	MARB	YG	CW	REA	FAT
12	-3.1	80	127	0.30	1.92	26	10	9	9	16	0.86	-0.07	32	0.62	0.01
57%	25%	3%	4%	8%	91%	39%	88%	78%	11%	36%	1%	4%	17%	1%	41%

This StockMarket son hits the mark from every performance angle. All economically relevant performance traits show a ratio of over 100. EPDs show a big birth to growth spread with outstanding carcass across the board. His dam is a first-calf heifer with a 105 MPPA, out of the productive Venice cow family with outstanding performance in the pedigree. Here is a very attractive made bull with excellent marks for foot and leg structure. Look for him to put pounds on at weaning as well as produce great replacement females.



Lot 16

16

### GMRA STOCKMARKET 1222J

Birth Date: 1/14/21 Reg. # 4465025 Category: 100% 1A

PIE STOCKMAN 4051  
**BIEBER CL STOCKMARKET E119**  
BIEBER CL ADELLE 475C  
GMRA ABSOLUTION 6201

**GMRA NEXA 940G**  
GMRA NEXA 769

LSF SAGA 1040Y  
PIE LAKOTA 046  
ANDRAS FUSION R236  
BIEBER ADELLE 297Y  
BROWN JYJ REDEMPTION Y1334  
GMRA JUANA 4100  
BECKTON EPIC R397 K  
GMRA NEXA 3102

BW	66
WW	592
WW-R	108
YW	1066
YW-R	103
IMF	4.11
REA	12.1
SC	38

ProS	HB	GM
125	60	65
7%	35%	5%

CED	BW	WW	YW	ADG	DMI	M	ME	HPG	CEM	ST	MARB	YG	CW	REA	FAT
16	-4.2	73	122	0.31	1.75	27	4	12	11	14	0.99	0.10	18	0.30	0.06
9%	12%	9%	7%	6%	81%	29%	59%	32%	2%	71%	1%	71%	67%	16%	99%

This StockMarket son started out nice and easy and kept an eye toward performance. Carcass scans were top notch and complement the #2 Marb EPD in the group. 10 EPDs are in the top 15% of the breed or higher and show a great birth to growth spread. His head is small and blends into a smooth shoulder and a very straight topline. Feet and leg scores are perfect. If you're looking for a numbered-up, calving ease bull that will put pounds on at weaning look no further.



Lot 17

17

### GMRA GAME CHANGER 1256J

Birth Date: 1/22/21 Reg. # 4465143 Category: 100% 1A

H2R PROFITBUILDER B403  
**GMRA GAME CHANGER 8270F**  
GMRA PRIDSTOM 069  
BECKTON EPIC R397 K

**GMRA VENICE 505**  
GMRA VENICE 829

LSF TAKEOVER 9943W  
BROWN MS P707 Y6674  
GMRA LARAMIE 5110  
GMRA PRIDSTOM 727  
BECKTON EPIC K F075  
BECKTON KIT F468 JL  
GMRA CITADEL 6109  
GMRA VENICE 146

BW	83
WW	638
WW-R	111
YW	1113
YW-R	105
IMF	2.70
REA	12.9
SC	39

ProS	HB	GM
105	65	40
25%	26%	41%

CED	BW	WW	YW	ADG	DMI	M	ME	HPG	CEM	ST	MARB	YG	CW	REA	FAT
11	0.1	85	133	0.30	1.76	29	8	14	7	16	0.40	0.14	40	0.37	0.05
77%	84%	1%	2%	7%	82%	18%	81%	8%	58%	45%	51%	89%	5%	9%	98%

This Game Changer son will put pounds on his calves at weaning. If you want to retain they will continue to grow through yearling. His WDA ratio is 105. This falls right in line with a breed-leading set of growth EPDs, all in single digit percentiles. His REA scan resulted in the #4 REA ratio of 116. Maternal numbers are solid backing up a maternal pedigree full of MPPAs of 100 or higher for nearly 40 years. Look for extra length and abundant muscling and a well-defined rear quarter.





18

**GMRA TESLA 1221J**Birth Date:  
1/13/21Reg. #  
4465019Category:  
100% 1A**GMRA TESLA 6214**

GMRA ANGIE ROSE 448

FEDDES BRUNSWICK D202

**GMRA LENA 907G**

GMRA LENA 749

MESSMER PACKER S008

GMRA LAKOTA 625

GMRA PEACEMAKER 1216

GMRA ANGIE ROSE 967

FEDDES SILVER BOW B226

FEDDES LARKABU X21

BROWN JYJ REDEMPTION Y1334

GMRA LENA 575

ProS	HB	GM
153	75	79
1%	12%	1%

BW	65
WW	583
WW-R	107
YW	1071
YW-R	104
IMF	4.84
REA	9.3
SC	34

CED	BW	WW	YW	ADG	DMI	M	ME	HPG	CEM	ST	MARB	YG	CW	REA	FAT
15	-3.0	69	122	0.33	2.13	32	15	12	10	19	1.01	0.09	29	0.23	0.03
20%	27%	17%	7%	2%	97%	3%	97%	24%	5%	11%	1%	65%	25%	26%	78%

Here's a calving ease Tesla son with plenty of growth potential. His IMF carcass scan with a 143 ratio ranks as #4 in the class and his actual and adjusted IMF measurements rank as #2. He carries a nicely balanced number profile with top percentile birth numbers and all growth in the top 19% or higher. Carcass is outstanding with the #1 Marb in the offering, and leads to a top 1% GM that is tied for #5. Maternal strengths are all there with an outstanding number profile and a top 16% HB.

His young dam posts a 103 MPPA. All that performance and genotype is balanced with an outstanding phenotype. All evaluations are above average with extra length on board and an ideal set of feet and leg scores. A nice, calm disposition just adds to the package.



Lot 19

19

**GMRA STOCKMARK 1282J**Birth Date:  
1/28/21Reg. #  
4465233Category:  
100% 1A

PIE STOCKMAN 4051

**BIEBER CL STOCKMARK E119**

BIEBER CL ADELLE 475C

GMRA PEACEMAKER 1216

**GMRA ANGIE ROSE 448**

GMRA ANGIE ROSE 967

LSF SAGA 1040Y

PIE LAKOTA 046

ANDRAS FUSION R236

BIEBER ADELLE 297Y

FRITZ JUSTICE 8013

GMRA THELMA 930

GMRA CITADEL 6109

GMRA ANGIE ROSE 171

ProS	HB	GM
128	58	70
5%	39%	3%

BW	88
WW	600
WW-R	104
YW	1064
YW-R	101
IMF	4.43
REA	10.1
SC	36

CED	BW	WW	YW	ADG	DMI	M	ME	HPG	CEM	ST	MARB	YG	CW	REA	FAT
12	-1.7	80	128	0.30	1.95	29	3	10	9	15	0.83	0.12	42	0.28	0.03
55%	52%	2%	3%	8%	92%	19%	53%	68%	19%	61%	1%	80%	3%	18%	73%

This bull is just really well-built with a nice clean sheath, a masculine front end, and a straight broad top accentuated by extra length. He turned in the #5 IMF ratio and posts a Marb EPD in the top 1%. Overall, he showcases high growth, excellent marbling and a strong REA. His Dam has a steady production record with an MPPA of 104 on 6. She has never had a WR under 101 and her average WR is 105.



Lot 20

20

**GMRA BRUNSWICK 1207J**Birth Date:  
1/9/21Reg. #  
4464963Category:  
100% 1A

FEDDES SILVER BOW B226

**FEDDES BRUNSWICK D202**

FEDDES LARKABU X21

BROWN-CH INDEPENDENCE D5670

**GMRA OPHELIA 919G**

GMRA OPHELIA 462

BROWN JYJ REDEMPTION Y1334

FEDDES LAKINA Y17

FEDDES BIG SKY R9

FEDDES LARKABU 827

5L INDEPENDENCE 560-298Y

CH PRILARK 3063

GMRA MAKE IT EASY 8226

GMRA OPHELIA 985

ProS	HB	GM
87	38	50
52%	79%	21%

BW	55
WW	590
WW-R	108
YW	1050
YW-R	102
IMF	3.37
REA	11.6
SC	35

CED	BW	WW	YW	ADG	DMI	M	ME	HPG	CEM	ST	MARB	YG	CW	REA	FAT
14	-3.7	70	117	0.29	2.11	32	11	10	8	14	0.56	-0.10	25	0.52	0.00
24%	17%	15%	12%	10%	97%	5%	91%	64%	24%	72%	18%	3%	39%	3%	16%

Here is a sleep-all-night heifer bull that will put calves on the ground with ease that keep an eye toward performance. His 55# birth weight is right in sync with a CED & BW EPD in the top 24% and 16%, respectively, while keeping all growth and carcass numbers at the top of the breed. In fact, his YG EPD is tied for #5 in the offering. His dam is a first calf heifer posting a 103 MPPA out of the highly maternal and powerful Ophelia cow family. He features a small head that flows into a smooth shoulder and onto a thick, broad top with abundant capacity and thickness. Calving ease with power.





### 21

#### GMRA SPARTACUS 1237J

Birth Date: 1/17/21 Reg. # 4465067 Category: 100% 1A

BIEBER ROUSE SAMURAI X22  
BIEBER SPARTACUS A193  
BIEBER TILLY 233U  
GMRA PEACEMAKER 1216

GMRA LARKABA 313  
GMRA LARKABA 156

LCC CHEYENNE B221L  
GHR MARITA R31  
LCOC HIGH NOON A093R  
BIEBER TILLY 7334  
FRITZ JUSTICE 8013  
GMRA THELMA 930  
MESSMER PACKER S008  
GMRA LARKABA 931

BW	81
WW	698
WW-R	121
YW	1132
YW-R	107
IMF	3.79
REA	11.6
SC	37

ProS	HB	GM
77	44	33
71%	68%	59%

CED	BW	WW	YW	ADG	DMI	M	ME	HPG	CEM	ST	MARB	YG	CW	REA	FAT
14	-2.8	82	126	0.27	2.19	34	9	9	8	14	0.61	0.22	33	0.12	0.06
32%	31%	2%	4%	18%	98%	1%	86%	86%	29%	65%	12%	99%	15%	50%	99%

Here is the #1 actual WW bull on test, pushing the scale down at 738# on August 15. His adjusted WW comes in at #2 and his WR is tied for #3. If you need a moderate birth weight bull to provide progeny that weigh-up right at weaning, look no further. Big WW and YW EPDs are complemented by a Milk that is tied for #2 in the class. His dam is a lifer here at GMRA, posting a 107 MPPA on 6 calves, never producing a WR or YR under 100. Her average BW ratio is a nice moderate 96 and we have retained every calf born. To read more about the impressive maternal line that has a direct lineage back to a 2-digit registration number, go to Lot 1's footnote. When you look at this calf, the old Leachman phrase of 'Butts, Guts and Nuts' comes to mind.



Lot 22

### 22

#### GMRA SPARTACUS 1249J

Birth Date: 1/20/21 Reg. # 4465121 Category: 100% 1A

BIEBER ROUSE SAMURAI X22  
BIEBER SPARTACUS A193  
BIEBER TILLY 233U  
BIEBER GOLDBAR Y379

GMRA LAKOTA 544  
GMRA LAKOTA 307A

LCC CHEYENNE B221L  
GHR MARITA R31  
LCOC HIGH NOON A093R  
BIEBER TILLY 7334  
LACY GOLD BAR 8123  
BASIN PRIMROSE 2043  
HXC CONQUEST 4405P  
GMRA LAKOTA 109

BW	81
WW	626
WW-R	109
YW	1123
YW-R	106
IMF	2.77
REA	12.4
SC	34

ProS	HB	GM
26	13	12
99%	98%	93%

CED	BW	WW	YW	ADG	DMI	M	ME	HPG	CEM	ST	MARB	YG	CW	REA	FAT
14	-3.6	72	109	0.23	1.96	27	12	6	8	12	0.43	0.17	19	-0.02	0.05
27%	18%	12%	22%	44%	93%	33%	94%	99%	33%	87%	43%	95%	66%	81%	97%

This moderate birth weight bull has kept an eye on performance through weaning and while on test. His foot and leg structure scores all ranked ideal. He shows great spring of rib with tons of muscling and thickness throughout. Notes at evaluation read: very square top, power bull, lots of bone, big rear quarter.



Lot 23

### 23

#### GMRA STOCKMARKET 1246J

Birth Date: 1/19/21 Reg. # 4465103 Category: 100% 1A

PIE STOCKMAN 4051  
BIEBER CL STOCKMARKET E119  
BIEBER CL ADELLE 475C  
BECKTON EPIC R397 K

GMRA ESTONIA 660  
GMRA ESTONIA 935W

LSF SAGA 1040Y  
PIE LAKOTA 046  
ANDRAS FUSION R236  
BIEBER ADELLE 297Y  
BECKTON EPIC K F075  
BECKTON KIT F468 JL  
LCB HOSS A444N  
GMRA ESTONIA 228



BW	71
WW	583
WW-R	101
YW	1094
YW-R	103
IMF	4.09
REA	11.6
SC	34

ProS	HB	GM
145	86	59
1%	4%	10%

CED	BW	WW	YW	ADG	DMI	M	ME	HPG	CEM	ST	MARB	YG	CW	REA	FAT
15	-5.5	60	97	0.23	1.51	25	4	11	11	19	0.73	0.11	27	0.30	0.05
23%	4%	51%	49%	46%	60%	47%	54%	56%	2%	7%	4%	77%	31%	16%	98%

They say a picture is worth 1,000 words, so I'll let the picture do the talking and keep this brief. Just a quick mention that all indices are breed-leading, as is BW, CEM, Stay and Marb. Phenotypic evaluations placed all scores well above average, with abundant capacity and muscling. Notes at evaluation time: Stud, calm.





Lot 24

24

**GMRA DOMAIN 1291J**Birth Date:  
1/31/21Reg. #  
4465263Category:  
100% 1A

BECKTON DOMINOR T122 Z1  
**3SCC DOMAIN A163**  
 3SCC EUCLA X723  
 GMRA PEACEMAKER 1216

**GMRA NEXA 579**  
 GMRA NEXA 672

BECKTON DOMINOR Z1 R610  
 BKT LARKABEL R038 WA  
 BASIN HOBO 0545  
 BSKF EUCLA U278  
 FRITZ JUSTICE 8013  
 GMRA THELMA 930  
 LCHMN RED SPREAD 1271F  
 GMRA NEXA 908

ProS HB GM  
**145 82 63**  
 1% 6% 7%

BW 98  
 WW 633  
 WW-R 110  
 YW 1110  
 YW-R 105  
 IMF 3.66  
 REA 12.0  
 SC 38

CED	BW	WW	YW	ADG	DMI	M	ME	HPG	CEM	ST	MARB	YG	CW	REA	FAT
8	2.2	68	111	0.27	2.00	28	6	14	2	22	0.68	0.20	47	0.28	0.05
96%	98%	19%	19%	22%	94%	25%	69%	9%	99%	1%	6%	98%	1%	18%	98%

Lots of power here with top-notch performance ratios including a WDA ratio of 105. All growth numbers are in the top 19% of the breed or higher with a CW that is tied for #5 in the class. Stay is strong and is tied for #2 and lends to a breed-leading ProS and HB. GM is right there as well, with strong Marb, REA and CW. He crosses all the t's and dots all the i's. His dam has an MPPA of 104 on 5 and all have been retained. Feet and leg structure is outstanding and phenotype is excellent.



Lot 25

25

**GMRA GAME CHANGER 1248J**Birth Date:  
1/19/21Reg. #  
4465107Category:  
100% 1A

H2R PROFITBUILDER B403  
**GMRA GAME CHANGER 8270F**  
 GMRA PRIDSTOM 069  
 GMRA MAKE IT EASY 8226

**LGR ESTONIA 157**  
 LGR ESTONIA 7102

LSF TAKEOVER 9943W  
 BROWN MS P707 Y6674  
 GMRA LARAMIE 5110  
 GMRA PRIDSTOM 727  
 BIEBER MAKE MIMI 7249  
 GMRA LAKOTA 625  
 GMRA GLADIATOR 2126  
 LGR ESTONIA 0002

ProS HB GM  
**71 40 31**  
 79% 74% 63%

BW 73  
 WW 584  
 WW-R 101  
 YW 1003  
 YW-R 95  
 IMF 2.09  
 REA 12.3  
 SC 34

CED	BW	WW	YW	ADG	DMI	M	ME	HPG	CEM	ST	MARB	YG	CW	REA	FAT
15	-3.5	64	96	0.20	1.84	31	10	7	10	15	0.55	-0.06	17	0.29	0.00
20%	20%	33%	50%	69%	88%	9%	87%	97%	8%	61%	20%	6%	70%	17%	15%

Here is a nice, well put-together Game Changer son with a solid number set. His dam knows her job, with an MPPA of 104 on 9 calves.

26

**GMRA STOCKMARK 1245J**Birth Date:  
1/19/21Reg. #  
4465101Category:  
100% 1A

PIE STOCKMAN 4051  
**BIEBER CL STOCKMARK E119**  
 BIEBER CL ADELLE 475C

GMRA STETSON 2240  
**GMRA LAKOTA 519C**  
 CRA JUSTICE'S RED

LSF SAGA 1040Y  
 PIE LAKOTA 046  
 ANDRAS FUSION R236  
 BIEBER ADELLE 297Y  
 LJC MISSION STATEMENT P27  
 GMRA VENICE 359  
 FRITZ JUSTICE 8013  
 CRA CHATEAU RED

ProS HB GM  
**86 38 48**  
 55% 78% 25%

BW 84  
 WW 641  
 WW-R 111  
 YW 1110  
 YW-R 105  
 IMF 2.79  
 REA 11.3  
 SC 34

CED	BW	WW	YW	ADG	DMI	M	ME	HPG	CEM	ST	MARB	YG	CW	REA	FAT
13	-3.1	70	118	0.30	2.14	29	13	8	10	14	0.52	0.04	30	0.47	0.04
42%	25%	16%	10%	7%	97%	15%	95%	94%	8%	67%	25%	34%	21%	4%	90%

There is a very solid set of numbers here with everything from moderate birth to abundant growth and high-end carcass. His dam is a consistent performer at GMRA with a 104 MPPA on 4 calves. He's got extra length and a straight top with a bit more frame under a deep cherry red coat.

27

**GMRA TESLA 1286J**Birth Date:  
1/29/21Reg. #  
4465245Category:  
100% 1A

GMRA TRILOGY 0226  
**GMRA TESLA 6214**  
 GMRA ANGIE ROSE 448  
 GMRA PEACEMAKER 1216

**GMRA ANNE 567**  
 GMRA ANNE 214

MESSMER PACKER S008  
 GMRA LAKOTA 625  
 GMRA PEACEMAKER 1216  
 GMRA ANGIE ROSE 967  
 FRITZ JUSTICE 8013  
 GMRA THELMA 930  
 HXC CONQUEST 4405P  
 GMRA ANNE 094

ProS HB GM  
**108 58 50**  
 21% 38% 21%

BW 85  
 WW 666  
 WW-R 116  
 YW 1107  
 YW-R 105  
 IMF 3.34  
 REA 11.3  
 SC 36

CED	BW	WW	YW	ADG	DMI	M	ME	HPG	CEM	ST	MARB	YG	CW	REA	FAT
15	-1.7	75	120	0.28	2.13	33	16	10	11	16	0.68	0.19	37	0.18	0.05
20%	52%	6%	8%	15%	97%	3%	98%	70%	2%	38%	6%	97%	8%	37%	97%

This moderate birth weight bull packed a punch at weaning time, resulting in a 105 WDA ratio. Birth numbers stay approachable and appropriate for breed-leading growth. Maternal numbers are supported by a Milk that is tied for #4 in the class. The maternal pedigree is strong and the dam posts a 105 MPPA. Her average BR is below 100 while the average WR is an impressive 107, and average YR is a 102 on 5. This Tesla son looks a lot like his sire and carries extra length.





### 28

#### DDRA REBEL 115

Birth Date:  
1/12/21

Reg. #  
4461085

Category:  
87.5% 1B

SUTH UNION 05C  
**DDRA REBEL 915**  
DDRA VENICE 4003  
4L ADVANCE VISION R15P

**DDRA SHIRLEY 5002**  
DDRA SHIRLEY 2002

ANDRAS FUSION R236  
SUTH EPIC XENA 3084  
GMRA PEACEMAKER 1216  
DDRA VENICE 2003  
4L SUPER VISION R2292  
4L MS ADVANCER R16L  
GMRA TRILOGY 0226

ProS	HB	GM
98	60	38
34%	35%	45%

BW	71
WW	637
WW-R	106
YW	1065
YW-R	101
IMF	2.17
REA	13.1
SC	35

CED	BW	WW	YW	ADG	DMI	M	ME	HPG	CEM	ST	MARB	YG	CW	REA	FAT
13	-3.2	66	108	0.26	1.92	25	12	9	9	18	0.48	0.06	26	0.33	0.04
43%	24%	26%	24%	24%	91%	55%	94%	81%	12%	20%	32%	46%	38%	12%	88%

A great birth to growth spread bull with a 71# birth going to a 682# actual WW ranking #4 in the offering, validating birth and growth numbers. His REA scan was outstanding with the actual measurement being tied for #2 in the class. He is a nice mature looking bull with a very broad top with extra capacity and thickness. Please Note he is a 1B, but qualifies for all Red Angus Value Added programs.



Lot 29

### 29

#### GMRA BRUNSWICK 1230J

Birth Date:  
1/16/21

Reg. #  
4465051

Category:  
100% 1A

FEDDES SILVER BOW B226  
**FEDDES BRUNSWICK D202**  
FEDDES LARKABU X21  
GMRA TRILOGY 0226

**GMRA MESA MAID 411**  
GMRA MESA MAID 207

BROWN JYJ REDEMPTION Y1334  
FEDDES LAKINA Y17  
FEDDES BIG SKY R9  
FEDDES LARKABU 827  
MESSMER PACKER S008  
GMRA LAKOTA 625  
HXC CONQUEST 4405P  
GMRA MESA MAID 057

ProS	HB	GM
107	69	38
22%	19%	47%

BW	92
WW	574
WW-R	100
YW	1093
YW-R	103
IMF	3.06
REA	13.4
SC	34

CED	BW	WW	YW	ADG	DMI	M	ME	HPG	CEM	ST	MARB	YG	CW	REA	FAT
9	0.4	75	123	0.30	1.95	27	13	10	6	20	0.45	-0.05	20	0.48	0.02
92%	87%	7%	6%	6%	92%	31%	95%	71%	72%	3%	39%	7%	60%	4%	59%

The Brunswick x Trilogy combination is one of our favorites, keeping plenty of length, muscle and capacity on board. Nice carcass scans resulted in his actual and adjusted REA and ratio sitting at #1 in the class. Outstanding REA is combined with high growth and a super phenotype.



Lot 30

### 30

#### GMRA TESLA 1261J

Birth Date:  
1/24/21

Reg. #  
4465171

Category:  
100% 1A

GMRA TRILOGY 0226  
**GMRA TESLA 6214**  
GMRA ANGIE ROSE 448  
H2R PROFITBUILDER B403

**GMRA MESA MAID 709**  
GMRA MESA MAID 528

MESSMER PACKER S008  
GMRA LAKOTA 625  
GMRA PEACEMAKER 1216  
GMRA ANGIE ROSE 967  
LSF TAKEOVER 9943W  
BROWN MS P707 Y6674  
BIEBER ROOSEVELT W384  
GMRA MESA MAID 292

ProS	HB	GM
135	77	58
3%	10%	11%

BW	72
WW	618
WW-R	107
YW	1089
YW-R	103
IMF	3.70
REA	10.4
SC	33

CED	BW	WW	YW	ADG	DMI	M	ME	HPG	CEM	ST	MARB	YG	CW	REA	FAT
17	-3.0	73	119	0.29	1.78	30	7	14	11	16	0.68	0.16	34	0.17	0.05
5%	27%	9%	9%	12%	83%	12%	73%	8%	2%	36%	6%	94%	12%	38%	94%

This Tesla son catches the eye with a great phenotype that shows extra capacity and thickness. He is clean fronted with a very tight sheath. The birth to growth spread is all there with high-end calving ease numbers and top 10% growth. The maternal line provides generations of performance with 30 years of 100+ MPPAs. Calving ease, growth, maternal power... he'll do it all.



31

## GMRA DOMAIN 1280J

Birth Date: 1/28/21 Reg. # 4465229 Category: 100% 1A



BECKTON DOMINOR T122 Z1  
3SCC DOMAIN A163  
3SCC EUCLA X723  
FRITZ JUSTICE 8013  
GMRA LAKOTA 596  
GMRA LAKOTA 336

BECKTON DOMINOR Z1 R610  
BKT LARKABEL R038 WA  
BASIN HOB0 0545  
BSKF EUCLA U278  
VGV JUSTICE 614  
FRITZ CHRIS 6047  
HXC CONQUEST 4405P  
GMRA LAKOTA 161

ProS HB GM

98 52 46

34% 51% 27%

CED	BW	WW	YW	ADG	DMI	M	ME	HPG	CEM	ST	MARB	YG	CW	REA	FAT
19	-3.4	60	98	0.24	1.77	27	7	9	9	16	0.56	0.05	26	0.36	0.04

2% 21% 48% 45% 41% 83% 35% 73% 80% 10% 39% 18% 43% 35% 10% 89%

This Justice dam made for a nice cross with Domain. Birth weight is right in line, and performance is still there. His CED is outstanding and is tied for #4 in the class. His Dam has a 102 MPPA on 5, which is impressive with an average BR of 87 on 5.



Lot 33

32

## GMRA GAME CHANGER 1258J

Birth Date: 1/23/21 Reg. # 4465149 Category: 100% 1A



H2R PROFITBUILDER B403  
GMRA GAME CHANGER 8270F  
GMRA PRIDSTOM 069  
GMRA MAKE IT EASY 8226  
GMRA INDIGO 488  
GMRA INDIGO 615

LSF TAKEOVER 9943W  
BROWN MS P707 Y6674  
GMRA LARAMIE 5110  
GMRA PRIDSTOM 727  
BIEBER MAKE MIMI 7249  
GMRA LAKOTA 625  
LCC CHEYENNE B221L  
GMRA INDIGO 230

ProS HB GM

101 61 40

30% 33% 41%

CED	BW	WW	YW	ADG	DMI	M	ME	HPG	CEM	ST	MARB	YG	CW	REA	FAT
14	-3.8	69	103	0.21	1.98	28	10	7	9	18	0.51	0.04	37	0.37	0.02

24% 16% 17% 34% 60% 94% 21% 87% 97% 17% 14% 26% 35% 8% 9% 47%

This bull showcases a very solid profile throughout, with 15 out of 19 numbers in the top half of the breed. He has a good spread from birth to growth. All carcass numbers are in the top 1/3 of the breed or higher with a standout REA in the top 10%.

33

## GMRA SPARTACUS 1272J

Birth Date: 1/25/21 Reg. # 4465201 Category: 100% 1A



BIEBER ROUSE SAMURAI X22  
BIEBER SPARTACUS A193  
BIEBER TILLY 233U  
HXC CONQUEST 4405P  
GMRA LAKOTA 378  
GMRA LAKOTA 646

LCC CHEYENNE B221L  
GHR MARITA R31  
LCC HIGH NOON A093R  
BIEBER TILLY 7334  
BECKTON JULIAN GG B571  
HXC ELLIE MAY MA638  
LCHMN RED SPREAD 1271F  
GMRA LAKOTA 322

ProS HB GM

72 16 56

78% 97% 12%

CED	BW	WW	YW	ADG	DMI	M	ME	HPG	CEM	ST	MARB	YG	CW	REA	FAT
10	-0.2	86	139	0.33	1.70	30	5	5	6	11	0.45	0.11	44	0.33	0.03

80% 80% 1% 1% 2% 78% 13% 61% 99% 75% 91% 39% 77% 2% 12% 73%

This high growth Spartacus son is a tank with extra capacity and depth with a heavily muscled rear quarter. Growth hits the mark with all performance ratios above 100, backed up by all growth EPDs in the top 1-3% and carcass falls in line nicely. He is out of a productive dam with an MPPA of 102 on 7 and a direct maternal lineage full of 100+ MPPAs for over 30 years. Foot and leg structure scores are excellent.

34

## GMRA DOMAIN 1278J

Birth Date: 1/27/21 Reg. # 4465221 Category: 100% 1A



BECKTON DOMINOR T122 Z1  
3SCC DOMAIN A163  
3SCC EUCLA X723  
ANDRAS NEW DIRECTION R240  
GMRA OPHELIA 6109  
GMRA OPHELIA 340

BECKTON DOMINOR Z1 R610  
BKT LARKABEL R038 WA  
BASIN HOB0 0545  
BSKF EUCLA U278  
ANDRAS IN FOCUS B152  
ANDRAS KURUBA B111  
MESSMER PACKER S008  
GMRA OPHELIA 728

ProS HB GM

133 66 67

3% 23% 5%

CED	BW	WW	YW	ADG	DMI	M	ME	HPG	CEM	ST	MARB	YG	CW	REA	FAT
10	-1.2	67	113	0.29	1.77	24	8	14	2	21	0.64	0.22	44	0.14	0.05

81% 62% 24% 16% 11% 83% 63% 82% 9% 99% 3% 9% 99% 2% 45% 96%

Here's another Domain power bull that hit the ground with a super acceptable birth weight. All performance ratios are tight, from 106-108. There is good growth in the numbers too, with standouts across the board, from Stay to Marb, lending to top-notch indices. The picture sums up the rest. Lots of capacity and muscling with a very straight top and good bone. Dam has a 102 MPPA on 4.



Lot 34





Lot 35

35

### GMRA TESLA 1233J

Birth Date: 1/17/21

Reg. # 4465059

Category: 100% 1A



#### GMRA TESLA 6214

GMRA ANGIE ROSE 448

H2R PROFITBUILDER B403

#### GMRA LAKOTA 706E

GMRA LAKOTA 563

MESSMER PACKER S008  
GMRA LAKOTA 625  
GMRA PEACEMAKER 1216  
GMRA ANGIE ROSE 967  
LSF TAKEOVER 9943W  
BROWN MS P707 Y6674  
BIEBER GOLDBAR Y379  
GMRA LAKOTA 667

ProS	HB	GM
109	55	53
20%	44%	16%

CED	BW	WW	YW	ADG	DMI	M	ME	HPG	CEM	ST	MARB	YG	CW	REA	FAT
18	-3.2	69	112	0.27	1.74	31	11	16	13	12	0.65	0.17	33	0.26	0.06
2%	24%	18%	18%	21%	81%	9%	90%	3%	1%	83%	9%	95%	15%	21%	99%

This bull is a calving ease specialist with all the right marks. He posts low actual birth weight, a breed leading birth number profile and a calving ease phenotype. And he still keeps an eye on performance with all growth numbers in the top 29% of the breed or higher. Carcass numbers are solid along with maternal proficiency. He is tied for the #1 HPG in the class and the #2 CEM. Foot and leg scores are all perfect.

36

### GMRA DOMAIN 1263J

Birth Date: 1/24/21

Reg. # 4465175

Category: 100% 1A



BECKTON DOMINOR T122 Z1

#### 3SCC DOMAIN A163

3SCC EUCLA X723

HXC DECLARATION 5504C

#### GMRA LARKABA 829F

GMRA LARKABA 313

BECKTON DOMINOR Z1 R610  
BKT LARKABEL R038 WA  
BASIN HOB0 0545  
BSKF EUCLA U278  
LEACHMAN PLEDGE A282Z  
HXC190Y  
GMRA PEACEMAKER 1216  
GMRA LARKABA 156

ProS	HB	GM
109	59	49
20%	36%	22%

CED	BW	WW	YW	ADG	DMI	M	ME	HPG	CEM	ST	MARB	YG	CW	REA	FAT
13	-0.9	73	122	0.31	1.74	25	9	13	5	17	0.46	0.18	36	0.26	0.06
46%	67%	10%	7%	5%	81%	50%	83%	17%	85%	22%	36%	96%	9%	21%	99%

Look for this smooth-made Domain son to feature extra length, a very straight top and excellent feet and leg structure.

37

### GMRA EXCELLENCE 1227J

Birth Date: 1/15/21

Reg. # 4465039

Category: 100% 1A



LJC MERLIN 937Z

#### KCC EXCELLENCE 139-774

139 1KCC

GMRA MAKE IT EASY 8226

#### GMRA REBELLA 174

GMRA REBELLA 806

LJC MERLIN T179  
TR CARRIE WT937  
SCHULER ENVY 7342T  
KCC MISS BV 2105-528  
BIEBER MAKE MIMI 7249  
GMRA LAKOTA 625  
GMRA LARAMIE 5110  
GMRA REBELLA 656

ProS	HB	GM
100	69	30
32%	18%	64%

CED	BW	WW	YW	ADG	DMI	M	ME	HPG	CEM	ST	MARB	YG	CW	REA	FAT
13	-3.2	66	104	0.24	1.86	33	8	8	9	19	0.48	0.00	18	0.29	0.02
46%	24%	27%	32%	39%	88%	3%	79%	91%	18%	10%	32%	19%	69%	17%	64%

This bull is the last in a long line of high-performance progeny out of his dam, GMRA Rebella 174. She has been with us since 2011 and has never ratioed a calf under 106 at weaning or 101 at yearling, giving her the outstanding honor of the #1 MPPA cow in the herd, posting a 112. She lost her calf this winter, but she has paid her dues and will stay on as the true matriarch of the herd. This bull keeps all birth and growth numbers in the top 1/3 of the breed or higher, along with Marb, REA and YG. His Milk is in the top 3% of the breed and is tied for #4 in the offering.



Bridger Chambers, professional steer wrestler and all-around good guy, sponsored by Green Mountain Red Angus

38

### GMRA DOMAIN 1269J

Birth Date: 1/24/21

Reg. # 4465187

Category: 100% 1A



BECKTON DOMINOR T122 Z1

#### 3SCC DOMAIN A163

3SCC EUCLA X723

GMRA TRILOGY 0226

#### GMRA PEACHA 571

GMRA PEACHA 047

BECKTON DOMINOR Z1 R610  
BKT LARKABEL R038 WA  
BASIN HOB0 0545  
BSKF EUCLA U278  
MESSMER PACKER S008  
GMRA LAKOTA 625  
HXC CONQUEST 4405P  
GMRA PEACHA 240

ProS	HB	GM
141	81	60
2%	6%	9%

CED	BW	WW	YW	ADG	DMI	M	ME	HPG	CEM	ST	MARB	YG	CW	REA	FAT
10	0.1	69	115	0.29	1.58	25	12	12	6	22	0.63	0.19	34	0.22	0.06
83%	84%	18%	13%	10%	67%	49%	93%	32%	76%	1%	10%	97%	12%	28%	99%

This Domain son hails from a dam with an impressive MPPA of 106 on 5 calves, with all being retained. Her calves have never turned in a WR under 105 or a YR under 103. Growth is consistent with a solid group of performance ratios all at 105 or 106. The consistency leads to a high growth EPD package with solid marbling and REA. Indices all rank in the top 10% or higher. All phenotypic evaluations rank above average and he shows extra length and a straight top leading to extra capacity and a nice muscle pattern in a dark cherry red package.





Lot 39

39

**GMRA BRUNSWICK 1242J**Birth Date:  
1/18/21Reg. #  
4465089Category:  
100% 1A

FEDDES SILVER BOW B226  
**FEDDES BRUNSWICK D202**  
 FEDDES LARKABU X21  
 GMRA TRINITY 5222

**GMRA NEXA 722**  
 GMRA NEXA 5108

BROWN JYJ REDEMPTION Y1334  
 FEDDES LAKINA Y17  
 FEDDES BIG SKY R9  
 FEDDES LARKABU 827  
 GMRA TRILOGY 0226  
 GMRA INDIGO 615  
 BIBER ROOSEVELT W384  
 GMRA NEXA 046

BW	72
WW	546
WW-R	95
YW	1034
YW-R	98
IMF	3.84
REA	11.5
SC	32

ProS	HB	GM
89	46	42
50%	63%	36%

CED	BW	WW	YW	ADG	DMI	M	ME	HPG	CEM	ST	MARB	YG	CW	REA	FAT
15	-3.5	64	94	0.19	1.94	33	8	13	10	13	0.68	0.05	28	0.50	0.05
18%	20%	35%	54%	72%	92%	2%	80%	18%	5%	80%	6%	42%	28%	3%	98%

This Brunswick son stamps the pattern with a nice broad top leading to a large, square rear quarter. His Milk is tied for #4 in the group. His dam has done a great job for us, posting an MPPA of 106.



Lot 40

40

**GMRA BRUNSWICK 1297J**Birth Date:  
2/2/21Reg. #  
4465285Category:  
100% 1A

FEDDES SILVER BOW B226  
**FEDDES BRUNSWICK D202**  
 FEDDES LARKABU X21  
 GMRA GREELEY 7207

**GMRA LAKOTA 977G**  
 GMRA LAKOTA 765

BROWN JYJ REDEMPTION Y1334  
 FEDDES LAKINA Y17  
 FEDDES BIG SKY R9  
 FEDDES LARKABU 827  
 H2R PROFITBUILDER B403  
 GMRA LAKOTA 4817  
 GMRA TRIGGER 4248  
 GMRA LAKOTA 478

BW	75
WW	564
WW-R	103
YW	1123
YW-R	109
IMF	3.00
REA	11.0
SC	35

ProS	HB	GM
127	53	75
5%	49%	2%

CED	BW	WW	YW	ADG	DMI	M	ME	HPG	CEM	ST	MARB	YG	CW	REA	FAT
9	-0.7	81	138	0.35	2.15	28	12	12	6	16	0.54	-0.01	53	0.55	-0.01
88%	71%	2%	1%	1%	98%	20%	93%	30%	75%	41%	21%	15%	1%	2%	8%

This moderate birth bull keeps performance in mind from weaning on through yearling with a top-end ADG of 114. His number profile backs up the high growth performance and combines with an outstanding set of carcass numbers with his CW at #2 in the offering. Maternal is strong and is backed up by the Lakota cow family that has MPPAs ranging from 100-112 going back over 30 years.



Lot 41

41

**GMRA EXCELLENCE 1293J**Birth Date:  
2/1/21Reg. #  
4465275Category:  
100% 1A

LJC MERLIN 937Z  
**KCC EXCELLENCE 139-774**  
 139 1KCC  
 FRITZ JUSTICE 8013

**GMRA ESTONIA 5102**  
 GMRA ESTONIA 346

LJC MERLIN T179  
 TR CARRIE WT937  
 SCHULER ENVY 7342T  
 KCC MISS BV 2105-528  
 VGW JUSTICE 614  
 FRITZ CHRIS 6047  
 BIBER ROOSEVELT W384  
 GMRA ESTONIA 9122

BW	86
WW	616
WW-R	107
YW	1118
YW-R	106
IMF	2.42
REA	11.5
SC	37

ProS	HB	GM
98	78	20
34%	9%	83%

CED	BW	WW	YW	ADG	DMI	M	ME	HPG	CEM	ST	MARB	YG	CW	REA	FAT
13	-1.7	66	106	0.25	1.78	29	0	10	8	18	0.41	0.09	15	-0.02	0.02
46%	52%	26%	28%	33%	84%	17%	35%	62%	29%	13%	48%	64%	80%	81%	61%

This Excellence son makes a strong showing with consistent growth on through test. All performance ratios are tight, ranging from 104-107. Growth numbers are in the top 25% of the breed or higher. His dam has an MPPA of 104 on 5, never weaning a calf under 100, and all have been retained. Look for above average capacity and a broad, straight top leading to a muscular rear quarter and feet and leg scores are ideal. He is known for his nice, calm disposition.





Lot 42

42

### DDRA BRUNSWICK 112

Birth Date: 1/11/21 Reg. # 4461155 Category: 100% 1A

FEDDES SILVER BOW B226  
**FEDDES BRUNSWICK D202**  
FEDDES LARKABU X21  
BROWN-CH INDEPENDENCE D5670  
**DDRA DAZZLE ME 907**  
DDRA DAZZLE ME 6013

BROWN JYJ REDEMPTION Y1334  
FEDDES LAKINA Y17  
FEDDES BIG SKY R9  
FEDDES LARKABU 827  
5L INDEPENDENCE 560-298Y  
CH PRILARK 3063  
GMRA MINOTAURO 3104  
DDRA DAZZLE ME 3021

ProS	HB	GM
101	60	40
30%	34%	41%

CED	BW	WW	YW	ADG	DMI	M	ME	HPG	CEM	ST	MARB	YG	CW	REA	FAT
12	-2.4	69	111	0.26	2.07	31	10	14	7	16	0.54	-0.14	20	0.65	0.01
52%	38%	17%	19%	25%	96%	8%	89%	8%	44%	41%	21%	1%	60%	1%	31%

This dark red Brunswick son has an outstanding cow family backing him with 5 generations of MPPAs reaching all the way to 111 and a dam with a 104. He turned in an outstanding REA scan with the actual measurement tied for #2 of all bulls on test. This backs up a nice set of carcass numbers with REA and YG sitting in the top 1% and the #2 YG EPD. Phenotype is very attractive with abundant length, capacity and thickness.

BW	84
WW	640
WW-R	111
YW	1101
YW-R	103
IMF	2.81
REA	13.1
SC	34

43

### GMRA BRUNSWICK 1296J

Birth Date: 2/2/21 Reg. # 4465283 Category: 100% 1A

FEDDES SILVER BOW B226  
**FEDDES BRUNSWICK D202**  
FEDDES LARKABU X21  
BROWN-CH INDEPENDENCE D5670  
**GMRA OPHELIA 960G**  
GMRA OPHELIA 6109

BROWN JYJ REDEMPTION Y1334  
FEDDES LAKINA Y17  
FEDDES BIG SKY R9  
FEDDES LARKABU 827  
5L INDEPENDENCE 560-298Y  
CH PRILARK 3063  
ANDRAS NEW DIRECTION R240  
GMRA OPHELIA 340

ProS	HB	GM
74	52	21
75%	50%	82%

CED	BW	WW	YW	ADG	DMI	M	ME	HPG	CEM	ST	MARB	YG	CW	REA	FAT
16	-2.1	59	93	0.21	2.05	29	11	13	8	16	0.51	0.00	11	0.25	0.03
10%	43%	54%	57%	60%	96%	14%	92%	23%	26%	39%	26%	18%	88%	23%	72%

The Brunswick x Independence combination leads to calving ease that still brings in pounds at weaning. This bull shows a nice muscle expression with a good topline and extra capacity on outstanding feet and legs. Economically relevant carcass traits are strong with top-notch Marb, YG and REA EPDs.

BW	61
WW	564
WW-R	103
YW	997
YW-R	96
IMF	2.25
REA	11.2
SC	35

44

### GMRA GAME CHANGER 1238J

Birth Date: 1/18/21 Reg. # 4465081 Category: 100% 1A

H2R PROFITBUILDER B403  
**GMRA GAME CHANGER 8270F**  
GMRA PRIDSTOM 069  
GMRA TRINITY 5222  
**GMRA LAKOTA 714**  
GMRA LAKOTA 596

LSF TAKEOVER 9943W  
BROWN MS P707 Y6674  
GMRA LARAMIE 5110  
GMRA PRIDSTOM 727  
GMRA TRILOGY 0226  
GMRA INDIGO 615  
FRITZ JUSTICE 8013  
GMRA LAKOTA 336

ProS	HB	GM
137	60	77
2%	35%	1%

CED	BW	WW	YW	ADG	DMI	M	ME	HPG	CEM	ST	MARB	YG	CW	REA	FAT
17	-4.0	80	139	0.37	1.82	28	16	12	11	16	0.62	0.13	47	0.30	0.03
6%	14%	2%	1%	1%	86%	27%	98%	26%	3%	43%	11%	83%	1%	16%	72%

This heifer bull candidate kept an eye toward performance on through test and is tied for the #2 ADG of 3.60 and ADG ratio. A nice set of indices is followed by breed-leading birth numbers and strong growth and carcass. GM is at #2 in the group, while YW is tied for #5, ADG is tied for #1 and CW is #4. A great phenotype shows plenty of thickness and a ton of capacity.

BW	75
WW	552
WW-R	96
YW	1130
YW-R	107
IMF	3.25
REA	10.2
SC	33

45

### GMRA DOMAIN 1271J

Birth Date: 1/25/21 Reg. # 4465199 Category: 100% 1A

BECKTON DOMINOR T122 Z1  
**3SCC DOMAIN A163**  
3SCC EUCLA X723  
GMRA TRINITY 5222  
**GMRA LARKOBA 797**  
GMRA LARKOBA 587

BECKTON DOMINOR Z1 R610  
BKT LARKABEL R038 WA  
BASIN HOB0 0545  
BSKF EUCLA U278  
GMRA TRILOGY 0226  
GMRA INDIGO 615  
GMRA STETSON 2240  
GMRA LARKOBA 761

ProS	HB	GM
127	63	64
6%	29%	6%

CED	BW	WW	YW	ADG	DMI	M	ME	HPG	CEM	ST	MARB	YG	CW	REA	FAT
15	-3.8	64	111	0.29	1.73	28	9	13	6	19	0.63	0.20	37	0.11	0.05
20%	16%	35%	20%	9%	80%	27%	86%	19%	75%	11%	10%	98%	8%	52%	96%

The Domain sons are so good at what they do, which is performance and power. Every measurable growth trait is above average with ratios from 102 to 113. In this case, we also see moderate birth with a CED and BW in the top 20% or higher leading into good growth and maternal highlights. He carries a bit more leg and strides out nicely. He will cover ground without breaking down, posting ideal scores for foot and leg structure.

BW	78
WW	586
WW-R	102
YW	1131
YW-R	107
IMF	2.72
REA	11.2
SC	33

46

### DDRA TRANSPORTER 153

Birth Date: 2/23/21 Reg. # 4461093 Category: 100% 1A

LSF MEW X-PORTER 6695D  
**SUTH TRANSPORTER 60G**  
SUTH CONCHETTA 5057  
BECKTON EPIC R397 K  
**GMRA LARKABA 742**  
GMRA LARKABA 156

REDHILL TEN X 104U 190A  
BROWN MS NEW STANDARD A7053  
SRR GRAND OSCAR 105  
SUTH MIMI'S CONCHETTA 2012  
BECKTON EPIC K F075  
BECKTON KIT F468 JL  
MESSMER PACKER S008  
GMRA LARKABA 931

ProS	HB	GM
105	50	55
24%	54%	14%

CED	BW	WW	YW	ADG	DMI	M	ME	HPG	CEM	ST	MARB	YG	CW	REA	FAT
7	0.1	73	118	0.28	1.04	28	1	12	5	14	0.31	0.03	39	0.50	0.03
97%	84%	9%	10%	12%	20%	22%	36%	24%	82%	66%	75%	32%	5%	3%	73%

This is a maternal brother to last year's high selling bull for DDRA. He has an outstanding cow family backing him. His dam posts a 101 MPPA and you find generations of performance with MPPAs reaching 106 going all the way back to a female born in the 1950's with a 2-digit registration number. His number profile is high growth, with both WW and YW in the top 10% of the breed. He is further complimented by posting some top carcass characteristics with CW in the top 6% and REA is in the top 3%.

BW	90
WW	632
WW-R	105
YW	1072
YW-R	102
IMF	1.68
REA	11.6
SC	35





Lot 47

47

**GMRA STOCKMARK 1215J**Birth Date:  
1/12/21Reg. #  
4465003Category:  
100% 1A

PIE STOCKMAN 4051  
**BIEBER CL STOCKMARK E119**  
 BIEBER CL ADELLE 475C  
 FEDDES BRUNSWICK D202

**GMRA INDIGO 922G**  
 GMRA INDIGO 779

LSF SAGA 1040Y  
 PIE LAKOTA 046  
 ANDRAS FUSION R236  
 BIEBER ADELLE 297Y  
 FEDDES SILVER BOW B226  
 FEDDES LARKABU X21  
 GMRA STETSON 2240  
 GMRA INDIGO 424

BW	64
WW	528
WW-R	97
YW	1004
YW-R	97
IMF	3.51
REA	10.8
SC	35

ProS	HB	GM
135	82	53
3%	6%	16%

CED	BW	WW	YW	ADG	DMI	M	ME	HPG	CEM	ST	MARB	YG	CW	REA	FAT
16	-5.2	69	114	0.28	1.87	25	5	11	10	19	0.60	0.00	28	0.55	0.04
10%	5%	18%	15%	15%	89%	55%	65%	46%	6%	10%	13%	19%	29%	2%	90%

This calving ease bull keeps an eye on carcass performance. All carcass numbers are in the top 23% of the breed. In fact, overall, he showcases 14 EPDs in the top 23% or higher. Phenotype shows extra length with great capacity and spring of rib, topped off with a perfect set of feet and leg evaluations.



Lot 48

48

**GMRA GAME CHANGER 1232J**Birth Date:  
1/16/21Reg. #  
4465055Category:  
100% 1A

H2R PROFITBUILDER B403  
**GMRA GAME CHANGER 8270F**  
 GMRA PRIDSTOM 069  
 HXC DECLARATION 5504C

**GMRA ESTONIA 724**  
 GMRA ESTONIA 747

LSF TAKEOVER 9943W  
 BROWN MS P707 Y6674  
 GMRA LARAMIE 5110  
 GMRA PRIDSTOM 727  
 LEACHMAN PLEDGE A282Z  
 HXC190Y  
 BIEBER MAKE MIMI 7249  
 GMRA ESTONIA 228

BW	75
WW	588
WW-R	102
YW	1111
YW-R	105
IMF	2.12
REA	12.5
SC	36

ProS	HB	GM
80	35	44
65%	82%	31%

CED	BW	WW	YW	ADG	DMI	M	ME	HPG	CEM	ST	MARB	YG	CW	REA	FAT
14	-3.0	63	105	0.26	1.90	26	14	10	9	14	0.46	0.10	34	0.40	0.05
26%	27%	36%	31%	26%	90%	39%	97%	68%	13%	69%	36%	73%	13%	7%	97%

Here is a nicely put-together Game Changer son. He hit the ground with a moderate birth weight with a calving ease front end, yet has a power bull look. All growth ratios rank from 102-108. A nice REA scan proves out a REA EPD at the top of the breed. Calving and growth numbers are all in the top 1/3 of the breed or higher with a really nice set of carcass numbers. He shows extra capacity and spring of rib with a heavily muscled rear quarter.



Lot 49

49

**GMRA STOCKMARK 1294J**Birth Date:  
2/1/21Reg. #  
4465277Category:  
100% 1A

PIE STOCKMAN 4051  
**BIEBER CL STOCKMARK E119**  
 BIEBER CL ADELLE 475C  
 MESSMER PACKER S008

**GMRA LARKABA 156**  
 GMRA LARKABA 931

LSF SAGA 1040Y  
 PIE LAKOTA 046  
 ANDRAS FUSION R236  
 BIEBER ADELLE 297Y  
 MESSMER JOSHUA 019P  
 MESSMER MILLIE 124P  
 GMRA PHOENIX 3X 588  
 GMRA LARKABA 84

BW	82
WW	578
WW-R	
YW	1071
YW-R	
IMF	3.16
REA	11.9
SC	35

ProS	HB	GM
153	102	51
1%	1%	20%

CED	BW	WW	YW	ADG	DMI	M	ME	HPG	CEM	ST	MARB	YG	CW	REA	FAT
14	-4.5	67	105	0.24	1.39	26	1	13	11	20	0.74	0.18	23	0.14	0.06
24%	9%	22%	29%	41%	47%	38%	37%	23%	3%	3%	4%	96%	47%	45%	99%

This bull shows no ratios since he was raised by a foster dam. He has done well through test and is very attractive made with a good rear quarter. His indices place him at the top of the breed and HB ranks at #3 in the offering. His birth dam was always known for performance and posted a 104 MPPA on 8 calves, with all being retained.



### 50 GMRA STOCKMARKET 1219J

Birth Date: 1/13/21 Reg. # 4465015 Category: 100% 1A



PIE STOCKMAN 4051  
BIEBER CL STOCKMARKET E119  
BIEBER CL ADELLE 475C  
GMRA STETSON 2240  
GMRA PEACHA 866F  
GMRA PEACHA 5111

LSF SAGA 1040Y  
PIE LAKOTA 046  
ANDRAS FUSION R236  
BIEBER ADELLE 297Y  
LJC MISSION STATEMENT P27  
GMRA VENICE 359  
BECKTON EPIC R397 K  
GMRA PEACHA 622

ProS	HB	GM
138	90	47
2%	3%	25%

BW	63
WW	589
WW-R	102
YW	986
YW-R	93
IMF	3.11
REA	12.3
SC	32

CED	BW	WW	YW	ADG	DMI	M	ME	HPG	CEM	ST	MARB	YG	CW	REA	FAT
18	-5.4	61	96	0.22	1.77	31	-1	6	13	20	0.70	0.13	27	0.31	0.06
2%	4%	44%	49%	55%	83%	7%	30%	99%	1%	3%	5%	86%	34%	15%	99%

This super-low birth weight bull features good growth with a nice REA scan. HB index is tied for #5 in the class and CEM is tied for #2. His dam features an MPPA of 106.

### 51 GMRA GAME CHANGER 1316J

Birth Date: 2/16/21 Reg. # 4465333 Category: 100% 1A



H2R PROFITBUILDER B403  
GMRA GAME CHANGER 8270F  
GMRA PRIDSTOM 069  
GMRA STETSON 2240  
GMRA ANGIE 4113  
GMRA ANGIE 223

LSF TAKEOVER 9943W  
BROWN MS P707 Y6674  
GMRA LARAMIE 5110  
GMRA PRIDSTOM 727  
LJC MISSION STATEMENT P27  
GMRA VENICE 359  
MESSMER PACKER S008  
GMRA ANGIE 568

ProS	HB	GM
102	53	49
28%	48%	23%

BW	97
WW	626
WW-R	109
YW	1177
YW-R	111
IMF	2.36
REA	11.4
SC	35

CED	BW	WW	YW	ADG	DMI	M	ME	HPG	CEM	ST	MARB	YG	CW	REA	FAT
11	-2.2	76	125	0.31	1.85	30	14	9	7	18	0.50	0.18	37	0.18	0.05
73%	42%	6%	5%	5%	88%	12%	96%	90%	48%	20%	28%	96%	9%	37%	96%

Power bull supreme! Growth ratios range from 109 on up to a 114 ADG. His WDA ratio of 113 is tied for #3 on test and his actual WDA is #1. All growth numbers are in the top 8% of the breed or higher, with a nice Marb and REA to match. He has excellent feet and leg structure, a straight, broad top and extra capacity and thickness in a cherry red hide.



Lot 52

### 52 GMRA STOCKMARKET 1239J

Birth Date: 1/18/21 Reg. # 4465083 Category: 100% 1A



PIE STOCKMAN 4051  
BIEBER CL STOCKMARKET E119  
BIEBER CL ADELLE 475C  
GMRA TESLA 6214  
GMRA LAKOTA 946G  
GMRA LAKOTA 478

LSF SAGA 1040Y  
PIE LAKOTA 046  
ANDRAS FUSION R236  
BIEBER ADELLE 297Y  
GMRA TRILOGY 0226  
GMRA ANGIE ROSE 448  
BECKTON EPIC R397 K  
GMRA LAKOTA 106

ProS	HB	GM
148	90	58
1%	3%	11%

BW	71
WW	564
WW-R	103
YW	1021
YW-R	99
IMF	3.30
REA	11.7
SC	36

CED	BW	WW	YW	ADG	DMI	M	ME	HPG	CEM	ST	MARB	YG	CW	REA	FAT
15	-3.0	66	109	0.27	1.78	28	9	13	12	20	0.70	0.04	28	0.50	0.05
15%	27%	25%	23%	22%	84%	24%	86%	23%	1%	6%	5%	37%	28%	3%	97%

A powerful maternal pedigree backs up this StockMarket son. His first-calf heifer dam is posting a 101 MPPA and is backed by 6 generations posting MPPAs from 101-112. Look for a calving ease head flowing into a smooth shoulder and a straight top that stays broad throughout. His numbers place him in the top quarter of the breed from birth through growth and a very strong set of maternal numbers prove the pedigree. All indices are in the top 8% of the breed. HB is tied for #5 in the class and CEM is tied for #4.



### 53 GMRA DECLARATION 1323J

Birth Date: 3/2/21 Reg. # 4465363 Category: 100% 1A



LEACHMAN PLEDGE A282Z  
HXC DECLARATION 5504C  
HXC190Y  
ANDRAS NEW DIRECTION R240  
GMRA LAKOTA 645D  
GMRA LAKOTA 314A

LSF NEXTPECTION 0083X  
LCOC ZARA TG004  
BECKTON NEBULA P P707  
HXC ELLIE MAY MA638  
ANDRAS IN FOCUS B152  
ANDRAS KURUBA B111  
HXC CONQUEST 4405P  
GMRA LAKOTA 923W

ProS	HB	GM
60	-1	62
91%	99%	8%

BW	88
WW	614
WW-R	107
YW	1128
YW-R	107
IMF	3.25
REA	12.8
SC	38

CED	BW	WW	YW	ADG	DMI	M	ME	HPG	CEM	ST	MARB	YG	CW	REA	FAT
10	-2.7	71	126	0.35	2.12	20	15	8	5	10	0.38	0.08	48	0.23	0.00
87%	32%	14%	4%	1%	97%	88%	97%	91%	85%	94%	56%	57%	1%	26%	10%

There is plenty of performance in this bull with a consistently tight set of growth ratios from 106-108. Carcass scans were solid with all ratios ranging from 103-128. This all falls in line with breed-leading GM and growth numbers, including a CW that is tied for #5 on test. His dam has an MPPA of 101 on 4. All of the above is combined with a nice, calm disposition.



54

**GMRA EXCELLENCE 1224J**Birth Date:  
1/14/21Reg. #  
4465029Category:  
100% 1A

LJC MERLIN 937Z  
**KCC EXCELLENCE 139-774**  
139 1KCC

H2R PROFITBUILDER B403  
**GMRA ANGIE ROSE 978G**  
GMRA ANGIE ROSE 291

LJC MERLIN T179  
TR CARRIE WT937  
SCHULER ENVY 7342T  
KCC MISS BV 2105-528  
LSF TAKEOVER 9943W  
BROWN MS P707 Y6674  
GMRA MAKE IT EASY 8226  
GMRA ANGIE ROSE 120

ProS	HB	GM
90	39	50
48%	76%	20%

BW	74
WW	556
WW-R	102
YW	1070
YW-R	103
IMF	2.81
REA	11.5
SC	35

CED	BW	WW	YW	ADG	DMI	M	ME	HPG	CEM	ST	MARB	YG	CW	REA	FAT
13	-2.3	67	112	0.28	1.53	27	5	8	8	14	0.43	-0.02	28	0.40	0.01
51%	40%	24%	18%	14%	62%	34%	61%	94%	27%	71%	43%	12%	30%	7%	36%

Here is a well put-together Excellence son with ideal marks for feet and leg structure.

55

**GMRA DOMAIN 1277J**Birth Date:  
1/27/21Reg. #  
4465219Category:  
100% 1A

BECKTON DOMINOR T122 Z1  
**3SCC DOMAIN A163**  
3SCC EUCLA X723

GMRA PEACEMAKER 1216  
**GMRA LARKABA 690**  
GMRA LARKABA 156

BECKTON DOMINOR Z1 R610  
BKT LARKABEL R038 WA  
BASIN HOB0 0545  
BSKF EUCLA U278  
FRITZ JUSTICE 8013  
GMRA THELMA 930  
MESSMER PACKER S008  
GMRA LARKABA 931

ProS	HB	GM
138	90	48
2%	3%	24%

BW	83
WW	600
WW-R	104
YW	1102
YW-R	104
IMF	2.53
REA	10.8
SC	34

CED	BW	WW	YW	ADG	DMI	M	ME	HPG	CEM	ST	MARB	YG	CW	REA	FAT
12	-1.3	74	120	0.29	1.74	26	8	15	5	21	0.55	0.19	34	0.19	0.06
66%	60%	8%	8%	11%	81%	37%	78%	5%	81%	2%	20%	97%	13%	34%	99%

Consistent performance is the name of the game here. All growth ratios hit 104, keeping him as a steady gainer throughout test. A number profile showing high growth and good carcass are on board and HPG is tied for #3 in the group. There's a nice phenotype with extra capacity and thickness and a straight, broad top.

56

**GMRA GAME CHANGER 1313J**Birth Date:  
2/13/21Reg. #  
4465321Category:  
100% 1A

H2R PROFITBUILDER B403  
**GMRA GAME CHANGER 8270F**  
GMRA PRIDSTOM 069  
GMRA PEACEMAKER 1216

**GMRA JUANA 420**  
GMRA JUANA 219

LSF TAKEOVER 9943W  
BROWN MS P707 Y6674  
GMRA LARAMIE 5110  
GMRA PRIDSTOM 727  
FRITZ JUSTICE 8013  
GMRA THELMA 930  
GMRA MAKE IT EASY 8226  
GMRA JUANA 999

ProS	HB	GM
106	44	62
23%	67%	7%

BW	96
WW	639
WW-R	111
YW	1139
YW-R	108
IMF	2.86
REA	11.1
SC	35

CED	BW	WW	YW	ADG	DMI	M	ME	HPG	CEM	ST	MARB	YG	CW	REA	FAT
11	1.0	80	132	0.33	2.24	30	12	11	6	15	0.60	0.07	44	0.35	0.01
76%	92%	3%	2%	2%	99%	9%	93%	50%	64%	57%	13%	53%	2%	11%	45%

Tons of power and performance! All growth ratios are 103 or higher with a WDA at 109 and the #5 actual WDA on test. All growth and carcass numbers hit the mark with many in single digit percentiles. His dam has an MPPA of 102 on 6 and the maternal line is strong with MPPAs in the triple digits for 30 years.

57

**GMRA EXCELLENCE 1234J**Birth Date:  
1/17/21Reg. #  
4465061Category:  
100% 1A

LJC MERLIN 937Z  
**KCC EXCELLENCE 139-774**  
139 1KCC  
GMRA ODYSSEY 7227

**GMRA LARKOBA 985G**  
GMRA LARKOBA 483

LJC MERLIN T179  
TR CARRIE WT937  
SCHULER ENVY 7342T  
KCC MISS BV 2105-528  
BECKTON EPIC R397 K  
GMRA VENICE 356  
GMRA TRILOGY 0226  
GMRA LARKOBA 464

ProS	HB	GM
107	74	33
21%	13%	58%

BW	66
WW	526
WW-R	96
YW	1009
YW-R	98
IMF	3.08
REA	10.6
SC	36

CED	BW	WW	YW	ADG	DMI	M	ME	HPG	CEM	ST	MARB	YG	CW	REA	FAT
15	-5.5	58	92	0.21	1.38	29	0	8	10	18	0.37	-0.03	19	0.27	0.01
21%	4%	57%	58%	59%	47%	18%	34%	91%	7%	15%	60%	10%	66%	20%	25%

This calving ease prospect turns in a top-notch BW EPD. A nice profile and phenotype sitting atop an excellent set of feet and legs.



Lot 57





### 58

## GMRA SPARTACUS 1244J

Birth Date:  
1/19/21

Reg. #  
4465099

Category:  
100% 1A



BIEBER ROUSE SAMURAI X22  
**BIEBER SPARTACUS A193**  
BIEBER TILLY 233U  
GMRA TRINITY 5222

**GMRA LAKOTA 842F**  
GMRA LAKOTA 378

LCC CHEYENNE B221L  
GHR MARITA R31  
LCOC HIGH NOON A093R  
BIEBER TILLY 7334  
GMRA TRILOGY 0226  
GMRA INDIGO 615  
HXC CONQUEST 4405P  
GMRA LAKOTA 646

BW	73
WW	545
WW-R	95
YW	988
YW-R	93
IMF	4.15
REA	9.4
SC	35

ProS	HB	GM
83	29	54
60%	90%	15%

CED	BW	WW	YW	ADG	DMI	M	ME	HPG	CEM	ST	MARB	YG	CW	REA	FAT
16	-5.0	65	105	0.25	1.70	33	7	11	10	11	0.67	0.27	36	0.05	0.07
12%	6%	30%	29%	30%	78%	2%	73%	52%	9%	92%	7%	99%	9%	66%	99%

This bull carries the calving ease look with a smaller head and shoulder. Number profile shows a nice birth to growth spread, while posting a high-end milk that ties for #4 overall. The maternal pedigree is strong showing MPPAs for multiple generations all the way from 100 to a 110, which belongs to his dam. He also posts ideal rankings for feet and leg structure.



Lot 59

### 59

## GMRA DOMAIN 1253J

Birth Date:  
1/20/21

Reg. #  
4465129

Category:  
100% 1A

BW	88
WW	553
WW-R	96
YW	999
YW-R	94
IMF	3.38
REA	11.1
SC	35

BECKTON DOMINOR T122 Z1  
**3SCC DOMAIN A163**  
3SCC EUCLA X723  
BIEBER ROOSEVELT W384

**GMRA PRIDSTOM 643**  
GMRA PRIDSTOM 326

BECKTON DOMINOR Z1 R610  
BKT LARKABEL R038 WA  
BASIN HOBO 0545  
BSKF EUCLA U278  
BIEBER ROUGH RIDER 10712  
BIEBER SHEBA 9602  
GMRA TRILOGY 0226  
GMRA PRIDSTOM 159

ProS	HB	GM
121	88	33
9%	3%	57%

CED	BW	WW	YW	ADG	DMI	M	ME	HPG	CEM	ST	MARB	YG	CW	REA	FAT
13	0.1	60	92	0.20	1.42	24	4	14	6	21	0.44	0.19	30	0.16	0.06
42%	84%	47%	59%	70%	51%	57%	58%	8%	76%	2%	41%	97%	23%	40%	99%

This bull's phenotype says it all. He's built right with an abundant, yet smooth muscle pattern and a beautiful thick rear quarter. Feet and leg structure rankings are all perfect. He comes from a long line of performance-minded females. His dam has an MPPA of 100 on 4 and the maternal line shows MPPAs all the way up to 107 for almost 60 years.

### 60

## GMRA EXCELLENCE 1283J

Birth Date:  
1/28/21

Reg. #  
4465235

Category:  
100% 1A

LJC MERLIN 937Z  
**KCC EXCELLENCE 139-774**  
139 1KCC

BIEBER ROOSEVELT W384

**GMRA MESA MAID 393**  
GMRA MESA MAID 968

LJC MERLIN T179  
TR CARRIE WT937  
SCHULER ENVY 7342T  
KCC MISS BV 2105-528  
BIEBER ROUGH RIDER 10712  
BIEBER SHEBA 9602  
MESSMER PACKER S008  
GMRA SA MESA MAID 054

ProS	HB	GM
84	76	8
58%	11%	96%

CED	BW	WW	YW	ADG	DMI	M	ME	HPG	CEM	ST	MARB	YG	CW	REA	FAT
13	-2.7	61	87	0.16	1.40	27	0	13	9	17	0.22	0.03	21	0.25	0.02
43%	32%	45%	69%	86%	49%	36%	35%	16%	17%	32%	92%	31%	58%	23%	66%

This bull's dam has been a solid producer for us, posting an MPPA of 102 on 7 head with an average WR of 103 on 7 and an average YR of 105. Look for an excellent set of feet and legs and a nice disposition.

### 61

## GMRA SPARTACUS 1228J

Birth Date:  
1/15/21

Reg. #  
4465041

Category:  
100% 1A



BIEBER ROUSE SAMURAI X22  
**BIEBER SPARTACUS A193**  
BIEBER TILLY 233U  
GMRA TESLA 6214

**GMRA OPHELIA 881F**  
GMRA OPHELIA 495

LCC CHEYENNE B221L  
GHR MARITA R31  
LCOC HIGH NOON A093R  
BIEBER TILLY 7334  
GMRA TRILOGY 0226  
GMRA ANGIE ROSE 448  
BIEBER ROOSEVELT W384  
GMRA OPHELIA 728

BW	77
WW	578
WW-R	100
YW	1094
YW-R	103
IMF	3.26
REA	9.3
SC	36

ProS	HB	GM
83	27	57
59%	92%	12%

CED	BW	WW	YW	ADG	DMI	M	ME	HPG	CEM	ST	MARB	YG	CW	REA	FAT
14	-3.1	72	119	0.29	1.95	30	14	7	9	13	0.64	0.22	41	0.08	0.05
34%	25%	11%	9%	11%	92%	10%	97%	98%	14%	75%	9%	99%	4%	59%	94%

There is a big birth to growth spread here. Dam has an MPPA of 103 with MPPAs in the first maternal generations all the way up to 109.





Custom Artwork by Sutton Dunbar

62

**DDRA GAME CHANGER 136**Birth Date:  
1/29/21Reg. #  
4461063Category:  
100% 1A

H2R PROFITBUILDER B403  
**GMRA GAME CHANGER 8270F**  
 GMRA PRIDSTOM 069  
 BIEBER GOLDBAR Y379

**DDRA MONA 5012**  
 DDRA MONA 2007

LSF TAKEOVER 9943W  
 BROWN MS P707 Y6674  
 GMRA LARAMIE 5110  
 GMRA PRIDSTOM 727  
 LACY GOLD BAR 8123  
 BASIN PRIMROSE 2043  
 GMRA TRILOGY 0226  
 C-T MONA 0704

BW	83
WW	541
WW-R	90
YW	1042
YW-R	99
IMF	3.97
REA	9.6
SC	35

ProS	HB	GM
115	55	60
13%	45%	9%

CED	BW	WW	YW	ADG	DMI	M	ME	HPG	CEM	ST	MARB	YG	CW	REA	FAT
13	-1.9	70	117	0.29	1.55	28	6	13	8	14	0.70	0.14	29	0.22	0.05
46%	48%	14%	12%	11%	64%	22%	67%	23%	29%	62%	5%	88%	27%	28%	97%

This bull belongs to Sutton, son of Jeremy and JD Dunbar, of Double D Red Angus. 136 is a nice, deep red, moderate-framed Game Changer son. He is backed by generations of highly productive cows with MPPAs ranging from 100 to 103 going back five generations. He also offers good growth and carcass with his MARB in the top 5% of the breed backing up the #3 Marb ratio in the group.

63

**GMRA GAME CHANGER 1312J**Birth Date:  
2/11/21Reg. #  
4465319Category:  
100% 1A

H2R PROFITBUILDER B403  
**GMRA GAME CHANGER 8270F**  
 GMRA PRIDSTOM 069  
 GMRA TRILOGY 0226

**GMRA ANGIE 437**  
 GMRA ANGIE 889

LSF TAKEOVER 9943W  
 BROWN MS P707 Y6674  
 GMRA LARAMIE 5110  
 GMRA PRIDSTOM 727  
 MESSMER PACKER S008  
 GMRA LAKOTA 625  
 GMRA CITADEL 6109  
 GMRA ANGIE 154

BW	88
WW	602
WW-R	104
YW	1044
YW-R	99
IMF	3.45
REA	12.4
SC	32

ProS	HB	GM
123	60	62
8%	34%	7%

CED	BW	WW	YW	ADG	DMI	M	ME	HPG	CEM	ST	MARB	YG	CW	REA	FAT
13	-2.8	77	120	0.26	1.74	26	14	15	8	16	0.83	0.12	35	0.32	0.05
45%	31%	4%	8%	22%	81%	41%	97%	6%	35%	41%	1%	80%	11%	13%	95%

This bull is numbered-up with standouts in growth, carcass and maternal with a HPG tied for #3 in the class. Feet and leg evaluations are excellent.

64

**GMRA EXCELLENCE 1240J**Birth Date:  
1/18/21Reg. #  
4465085Category:  
100% 1A

LJC MERLIN 937Z  
**KCC EXCELLENCE 139-774**  
 139 1KCC  
 FRITZ JUSTICE 8013

**GMRA LAKOTA 383**  
 GMRA LAKOTA 986

LJC MERLIN T179  
 ITR CARRIE WT937  
 SCHULER ENVY 7342T  
 KCC MISS BV 2105-528  
 VGW JUSTICE 614  
 FRITZ CHRIS 6047  
 BROWN COMMITMENT S7206  
 GMRA LAKOTA 046

BW	66
WW	538
WW-R	93
YW	1048
YW-R	99
IMF	3.27
REA	10.7
SC	38

ProS	HB	GM
110	56	54
18%	43%	15%

CED	BW	WW	YW	ADG	DMI	M	ME	HPG	CEM	ST	MARB	YG	CW	REA	FAT
15	-3.3	65	110	0.28	1.63	27	-2	7	9	15	0.59	0.05	24	0.13	0.01
16%	23%	30%	21%	13%	71%	34%	24%	96%	12%	56%	14%	44%	43%	47%	39%

This is a nicely put together Excellence son that show that deep cherry red color. Birth to growth numbers are all in the top 1/3 of the breed or higher.



Lot 64



### 65 GMRA EXCELLENCE 1209J

Birth Date: 1/11/21 Reg. # 4464981 Category: 100% 1A



LJC MERLIN 937Z  
KCC EXCELLENCE 139-774  
139 1KCC

HXC DECLARATION 5504C

GMRA NEXA 959G

GMRA NEXA 494

LJC MERLIN T179  
TR CARRIE WT937  
SCHULER ENVY 7342T  
KCC MISS BV 2105-528  
LEACHMAN PLEDGE A282Z  
HXC190Y  
BIEBER GOLDBAR Y379  
GMRA NEXA 166

ProS	HB	GM
139	62	77
2%	30%	1%

BW	65
WW	558
WW-R	102
YW	1041
YW-R	101
IMF	3.76
REA	11.9
SC	37

CED	BW	WW	YW	ADG	DMI	M	ME	HPG	CEM	ST	MARB	YG	CW	REA	FAT
13	-3.3	66	115	0.31	1.60	28	1	10	8	16	0.62	-0.08	35	0.47	-0.01
40%	23%	28%	14%	6%	69%	27%	38%	68%	21%	45%	11%	4%	11%	4%	3%

Calving ease bull with above average growth and a strong IMF and REA scan. All carcass EPDs are in the top 14% of the breed or higher with growth numbers in the top 28%. Look for an excellent feet and leg structure.

### 66 GMRA HEAVILY ARMED 1310J

Birth Date: 2/10/21 Reg. # 4465313 Category: 100% 1A

BOW CRK HEAVILY ARMED 310A  
BIEBER HEAVILY ARMED E392  
BIEBER RED BEVERLY 139B

HXC DECLARATION 5504C

GMRA ESTONIA 804F

GMRA ESTONIA 415

BUF CRK THE RIGHT KIND U199  
TWIN PONDS HI-RB-LS 408  
BIEBER H HUGHES W109  
BIEBER RED BEVERLY 234Z  
LEACHMAN PLEDGE A282Z  
HXC190Y  
FRITZ JUSTICE 8013  
GMRA ESTONIA 513

ProS	HB	GM
69	37	32
82%	80%	60%

BW	90
WW	633
WW-R	110
YW	1124
YW-R	106
IMF	2.44
REA	12.3
SC	39

CED	BW	WW	YW	ADG	DMI	M	ME	HPG	CEM	ST	MARB	YG	CW	REA	FAT
8	3.7	95	154	0.37	2.20	27	10	10	6	13	0.33	0.04	33	0.25	0.01
93%	99%	1%	1%	1%	98%	35%	88%	60%	64%	80%	70%	36%	14%	23%	26%

This is a high growth power bull with all growth ratios over 101. His number profile matches with the #1 WW EPD, a YW tied for #1, and an ADG tied for #4 and CW is in the top 15%. There is a nice phenotype on board as well, with a broad top, ample capacity and extra thickness. His dam has in impressive MPPA of 106.

### 67 GMRA GAME CHANGER 1302J

Birth Date: 2/5/21 Reg. # 4465299 Category: 100% 1A

H2R PROFITBUILDER B403  
GMRA GAME CHANGER 8270F  
GMRA PRIDSTOM 069

GMRA TESLA 6214

GMRA PRINCESS 8106F

GMRA PRINCESS 402

LSF TAKEOVER 9943W  
BROWN MS P707 Y6674  
GMRA LARAMIE 5110  
GMRA PRIDSTOM 727  
GMRA TRILOGY 0226  
GMRA ANGIE ROSE 448  
GMRA MOUNTAIN 9287  
GMRA PRINCESS 104

ProS	HB	GM
114	76	38
15%	11%	46%

BW	62
WW	552
WW-R	96
YW	996
YW-R	94
IMF	3.24
REA	10.4
SC	35

CED	BW	WW	YW	ADG	DMI	M	ME	HPG	CEM	ST	MARB	YG	CW	REA	FAT
16	-4.0	63	104	0.26	1.79	31	7	13	10	17	0.64	0.11	14	0.06	0.04
9%	14%	37%	32%	28%	84%	9%	76%	17%	4%	22%	9%	76%	80%	64%	92%

Heifer bull alert! Maternal numbers are excellent and growth stays in the top 1/3 of the breed. Feet and leg evaluations are ideal with all scores at 5.

### 68 GMRA TESLA 1204J

Birth Date: 1/8/21 Reg. # 4464951 Category: 100% 1A

GMRA TRILOGY 0226  
GMRA TESLA 6214  
GMRA ANGIE ROSE 448

FEDDES BRUNSWICK D202

GMRA ANGIE ROSE 904G

GMRA ANGIE ROSE 726

MESSMER PACKER S008  
GMRA LAKOTA 625  
GMRA PEACEMAKER 1216  
GMRA ANGIE ROSE 967  
FEDDES SILVER BOW B226  
FEDDES LARKABU X21  
H2R PROFITBUILDER B403  
GMRA ANGIE ROSE 554

ProS	HB	GM
86	49	36
55%	57%	50%

BW	70
WW	541
WW-R	99
YW	1006
YW-R	97
IMF	3.20
REA	10.8
SC	36

CED	BW	WW	YW	ADG	DMI	M	ME	HPG	CEM	ST	MARB	YG	CW	REA	FAT
13	-2.0	67	110	0.27	1.92	30	13	13	10	14	0.49	0.02	20	0.24	0.02
51%	46%	24%	20%	18%	91%	13%	95%	23%	8%	65%	30%	27%	61%	24%	59%

Solid bull out of a first-calf heifer with a nice straight top leading down to a square rear quarter.



### 69 GMRA EXCELLENCE 1210J

Birth Date: 1/11/21 Reg. # 4464983 Category: 100% 1A

LJC MERLIN 937Z  
KCC EXCELLENCE 139-774  
139 1KCC

GMRA ABSOLUTION 6201

LGR ESTONIA 953G

LGR ESTONIA 641

LJC MERLIN T179  
TR CARRIE WT937  
SCHULER ENVY 7342T  
KCC MISS BV 2105-528  
BROWN JYJ REDEMPTION Y1334  
GMRA JUANA 4100  
FEDDES BOBCAT A230  
LGR ESTONIA 212

ProS	HB	GM
121	74	47
9%	13%	26%

BW	65
WW	531
WW-R	97
YW	990
YW-R	96
IMF	2.88
REA	9.0
SC	35

CED	BW	WW	YW	ADG	DMI	M	ME	HPG	CEM	ST	MARB	YG	CW	REA	FAT
13	-4.2	52	86	0.21	1.34	29	1	12	9	18	0.46	-0.01	23	0.10	-0.01
37%	12%	77%	71%	62%	42%	16%	38%	32%	18%	21%	36%	16%	47%	54%	3%

Extreme length with excellent feet and legs.





Lot 70

70

**GMRA DOMAIN 1262J**
 Birth Date: 1/24/21  
 Reg. # 4465173

Category: 100% 1A


 BECKTON DOMINOR T122 Z1  
**3SCC DOMAIN A163**  
 3SCC EUCLA X723  
 GMRA TRILOGY 0226

 BECKTON DOMINOR Z1 R610  
 BKT LARKABEL R038 WA  
 BASIN HOBO 0545  
 BSKF EUCLA U278  
 MESSMER PACKER S008  
 GMRA LAKOTA 625  
 HXC CONQUEST 4405P  
 GMRA OPHELIA 164

**GMRA OPHELIA 578**  
 GMRA OPHELIA 317

ProS	HB	GM
150	73	77
1%	14%	2%

BW	88
WW	561
WW-R	97
YW	1122
YW-R	106
IMF	3.65
REA	10.6
SC	36

CED	BW	WW	YW	ADG	DMI	M	ME	HPG	CEM	ST	MARB	YG	CW	REA	FAT
11	0.5	73	126	0.33	1.25	23	5	12	5	19	0.67	0.16	36	0.13	0.04
71%	88%	10%	4%	2%	35%	70%	64%	29%	86%	7%	7%	93%	10%	47%	86%

This bull hit his stride at weaning and excelled at growth on through yearling. His ADG ratio is tied for #4 in the offering and he posts the #5 actual ADG. All indices are in the top 16% or higher and pave the way for top-notch growth numbers and Stay. One look at this bull tells you he can cover country with that long stride and he will make pounds of beef. Phenotypic evaluations ranked him above average for length, capacity and thickness.

71

**GMRA DOMAIN 1318J**
 Birth Date: 2/19/21  
 Reg. # 4465341  
 Category: 100% 1A

 BECKTON DOMINOR T122 Z1  
**3SCC DOMAIN A163**  
 3SCC EUCLA X723  
 ANDRAS NEW DIRECTION R240

 BECKTON DOMINOR Z1 R610  
 BKT LARKABEL R038 WA  
 BASIN HOBO 0545  
 BSKF EUCLA U278  
 ANDRAS IN FOCUS B152  
 ANDRAS KURUBA B111  
 GMRA MOUNTAIN 9287  
 LGR ESTONIA 212

**LGR ESTONIA 885F**  
 LGR ESTONIA 434

ProS	HB	GM
101	60	41
30%	34%	39%

BW	79
WW	588
WW-R	102
YW	1036
YW-R	98
IMF	4.13
REA	10.9
SC	34

CED	BW	WW	YW	ADG	DMI	M	ME	HPG	CEM	ST	MARB	YG	CW	REA	FAT
13	-3.0	51	83	0.20	1.60	26	-2	13	5	17	0.60	0.09	19	0.16	0.04
46%	27%	79%	77%	71%	68%	37%	25%	18%	87%	31%	13%	63%	66%	40%	90%

This bull carries a nice smooth build with a smaller head and narrow shoulder. Feet and leg scores are excellent. He is out of the elite Ophelia cow family and a dam with an MPPA of 102. You have to go back 25 years before you find an MPPA under 101.

72

**GMRA TESLA 1236J**
 Birth Date: 1/17/21  
 Reg. # 4465065

Category: 100% 1A


 GMRA TRILOGY 0226  
**GMRA TESLA 6214**  
 GMRA ANGIE ROSE 448  
 FEDDES BRUNSWICK D202

 MESSMER PACKER S008  
 GMRA LAKOTA 625  
 GMRA PEACEMAKER 1216  
 GMRA ANGIE ROSE 967  
 FEDDES SILVER BOW B226  
 FEDDES LARKABU X21  
 VGW NORTHERN CANYON 5109  
 GMRA FIREFLY 128

**GMRA FIREFLY 964G**  
 GMRA FIREFLY 189

ProS	HB	GM
158	104	54
1%	1%	16%

BW	73
WW	543
WW-R	99
YW	973
YW-R	94
IMF	2.88
REA	9.1
SC	33

CED	BW	WW	YW	ADG	DMI	M	ME	HPG	CEM	ST	MARB	YG	CW	REA	FAT
17	-2.2	61	99	0.24	1.87	32	10	15	12	22	0.68	0.02	25	0.26	0.01
8%	42%	46%	42%	38%	89%	4%	89%	5%	1%	1%	6%	26%	38%	21%	41%

There is quite a set of powerful maternal numbers here. All are in single digits with the #1 HB in the offering, the #4 ProS, a HPG tied for #3 a CEM tied for #4 and Stay tied for #2.

73

**GMRA SPARTACUS 1306J**
 Birth Date: 2/7/21  
 Reg. # 4465305  
 Category: 100% 1A

 BIEBER ROUSE SAMURAI X22  
**BIEBER SPARTACUS A193**  
 BIEBER TILLY 233U  
 ANDRAS NEW DIRECTION R240

 LCC CHEYENNE B221L  
 GHR MARITA R31  
 LCC HIGH NOON A093R  
 BIEBER TILLY 7334  
 ANDRAS IN FOCUS B152  
 ANDRAS KURUBA B111  
 GMRA STETSON 2240  
 GMRA LARKOBA 421

**GMRA LARKOBA 840F**  
 GMRA LARKOBA 634

ProS	HB	GM
81	17	64
64%	97%	6%

BW	73
WW	563
WW-R	98
YW	1042
YW-R	98
IMF	4.91
REA	10.0
SC	38

CED	BW	WW	YW	ADG	DMI	M	ME	HPG	CEM	ST	MARB	YG	CW	REA	FAT
12	-1.6	69	115	0.29	1.85	25	8	10	7	10	0.70	0.18	39	0.12	0.04
57%	54%	17%	13%	11%	88%	47%	80%	68%	54%	94%	5%	96%	6%	50%	90%

Here is the #1 Marbling bull in the offering. His IMF ratio is #1 as are his actual and adjusted measurements. Birth numbers are in the top 16% of the breed and GM, Marb and CW are all excellent. Look for abundant capacity and a nice, quiet disposition.

74

**GMRA EXCELLENCE 1214J**
 Birth Date: 1/11/21  
 Reg. # 4464991

Category: 100% 1A

 LJC MERLIN 937Z  
**KCC EXCELLENCE 139-774**  
 139 1KCC  
 HXC DECLARATION 5504C

 LJC MERLIN T179  
 TR CARRIE WT937  
 SCHULER ENVY 7342T  
 KCC MISS BV 2105-528  
 LEACHMAN PLEDGE A282Z  
 HXC190Y  
 GMRA TRILOGY 0226  
 GMRA LAKOTA 258

**GMRA LAKOTA 9101G**  
 GMRA LAKOTA 452

ProS	HB	GM
115	67	48
13%	22%	23%

BW	65
WW	516
WW-R	94
YW	978
YW-R	95
IMF	2.93
REA	11.5
SC	34

CED	BW	WW	YW	ADG	DMI	M	ME	HPG	CEM	ST	MARB	YG	CW	REA	FAT
14	-3.2	61	99	0.24	1.45	26	2	10	9	17	0.49	-0.12	21	0.50	0.00
24%	24%	46%	44%	42%	54%	46%	41%	77%	15%	27%	30%	2%	58%	3%	13%

This Excellence son is following the footsteps of his sire as a sleep-all-night heifer bull. He comes from the well-balanced, high production Lakota cow family. He is easy on the eyes with a great conformation and perfect marks for feet and leg structure.



### 75 GMRA GAME CHANGER 1298J

Birth Date: 2/2/21  
Reg. # 4465287

Category: 100% 1A



H2R PROFITBUILDER B403  
**GMRA GAME CHANGER 8270F**  
GMRA PRIDSTOM 069  
GMRA TRILOGY 0226

LSF TAKEOVER 9943W  
BROWN MS P707 Y6674  
GMRA LARAMIE 5110  
GMRA PRIDSTOM 727  
MESSMER PACKER S008  
GMRA LAKOTA 625  
GMRA MAKE IT EASY 8226  
LGR ESTONIA 2002

BW	60
WW	518
WW-R	90
YW	1039
YW-R	98
IMF	2.77
REA	10.6
SC	37

ProS	HB	GM
128	63	64
5%	28%	6%

CED	BW	WW	YW	ADG	DMI	M	ME	HPG	CEM	ST	MARB	YG	CW	REA	FAT
17	-5.5	73	121	0.30	1.51	28	11	11	12	16	0.53	0.08	40	0.30	0.02
5%	4%	9%	7%	7%	60%	20%	92%	41%	1%	43%	23%	60%	5%	16%	54%

Heifer bull supreme! All indices are in the top quarter of the breed with single digit birth numbers. The overall EPD profile is solid with a big birth to growth spread, strong carcass and strong maternal, including a CEM that is tied for #4 in the class. His dam is a consistent producer with an MPPA of 101 on 6 calves. This bull is nicely put together with a super straight top and extra length in a dark red package.

### 76 GMRA BRUNSWICK 1311J

Birth Date: 2/11/21  
Reg. # 4465317

Category: 100% 1A



FEDDES SILVER BOW B226  
**FEDDES BRUNSWICK D202**  
FEDDES LARKABU X21  
GMRA TRILOGY 0226

BROWN JYJ REDEMPTION Y1334  
FEDDES LAKINA Y17  
FEDDES BIG SKY R9  
FEDDES LARKABU 827  
MESSMER PACKER S008  
GMRA LAKOTA 625  
BIEBER MAKE MIMI 7249  
GMRA OPHELIA 036

ProS	HB	GM
160	95	64
1%	1%	6%

CED	BW	WW	YW	ADG	DMI	M	ME	HPG	CEM	ST	MARB	YG	CW	REA	FAT
13	-1.8	72	117	0.29	1.95	28	12	13	8	22	0.61	-0.06	38	0.71	0.02
37%	49%	12%	11%	12%	93%	22%	94%	18%	22%	1%	12%	5%	7%	1%	52%

There are no ratios on this bull as he was a graft. He is a nice, solid bull with extra length. Numbers show high growth, high carcass and high maternal. A strong group of breed-leading indices is on board with the #3 ProS and the #4 HB, along with a GM in the top 6%. His Stay is tied for #2 in the group and REA is #3.



Lot 77

### 77 GMRA BRUNSWICK 1235J

Birth Date: 1/17/21  
Reg. # 4465063

Category: 100% 1A



FEDDES SILVER BOW B226  
**FEDDES BRUNSWICK D202**  
FEDDES LARKABU X21  
GMRA TRINITY 5222

BROWN JYJ REDEMPTION Y1334  
FEDDES LAKINA Y17  
FEDDES BIG SKY R9  
FEDDES LARKABU 827  
GMRA TRILOGY 0226  
GMRA INDIGO 615  
GMRA PEACEMAKER 1216  
GMRA ANNE 214

ProS	HB	GM
90	39	50
48%	77%	20%

CED	BW	WW	YW	ADG	DMI	M	ME	HPG	CEM	ST	MARB	YG	CW	REA	FAT
13	-2.0	74	121	0.30	2.03	28	13	14	8	13	0.58	-0.02	28	0.43	0.02
42%	46%	8%	7%	8%	95%	27%	95%	12%	26%	81%	16%	13%	28%	6%	47%

High growth number profile combines nicely with a solid set of carcass EPDs. Look for a nice phenotype with a broad, straight top and excellent feet and leg structure.

### 78 GMRA BRUNSWICK 1257J

Birth Date: 1/22/21  
Reg. # 4465145

Category: 100% 1A



FEDDES SILVER BOW B226  
**FEDDES BRUNSWICK D202**  
FEDDES LARKABU X21  
HXC CONQUEST 4405P

BROWN JYJ REDEMPTION Y1334  
FEDDES LAKINA Y17  
FEDDES BIG SKY R9  
FEDDES LARKABU 827  
BECKTON JULIAN GG B571  
HXC ELLIE MAY MA638  
GMRA MAKE IT EASY 8226  
GMRA MESA MAID 368

BW	103
WW	672
WW-R	117
YW	1069
YW-R	101
IMF	3.00
REA	12.6
SC	38

ProS	HB	GM
69	19	50
82%	97%	20%

CED	BW	WW	YW	ADG	DMI	M	ME	HPG	CEM	ST	MARB	YG	CW	REA	FAT
7	2.7	86	135	0.31	2.34	27	22	6	5	15	0.64	-0.13	31	0.68	0.00
97%	99%	1%	1%	6%	99%	32%	99%	98%	90%	52%	9%	2%	21%	1%	12%

At this point, don't worry about the birth weight... just look forward to pounds at weaning! His WR is #5 in the entire class, with the #2 actual WW and the #5 adjusted WW. His numbers tell the tale with extreme growth all in single digits and a WW EPD that ranks at #5. Growth and carcass EPDs stay strong throughout with a YG that sits at #3 and a REA tied for #4.

### 79 DDRA BRUNSWICK 105

Birth Date: 1/6/21  
Reg. # 4461069

Category: 87.5% 1B



FEDDES SILVER BOW B226  
**FEDDES BRUNSWICK D202**  
FEDDES LARKABU X21  
GMRA PEACEMAKER 1216

BROWN JYJ REDEMPTION Y1334  
FEDDES LAKINA Y17  
FEDDES BIG SKY R9  
FEDDES LARKABU 827  
FRITZ JUSTICE 8013  
GMRA THELMA 930  
LAUBACH LOMBARDI 9014

ProS	HB	GM
135	89	45
3%	3%	30%

CED	BW	WW	YW	ADG	DMI	M	ME	HPG	CEM	ST	MARB	YG	CW	REA	FAT
13	-2.0	63	101	0.24	2.14	26	12	9	8	23	0.67	-0.05	22	0.53	0.03
49%	46%	37%	39%	41%	97%	45%	93%	86%	27%	1%	7%	7%	53%	2%	69%

A nice well-rounded bull. He offers plenty of personal performance and a strong EPD profile with 6 values in the top 10% of the breed. These include ProS, HB, Stay, Marb, YG, and REA. He ranks #1 for Stay in the offering. Please note he is a 1B, but qualifies for all Red Angus Value Added programs.



80

**GMRA BRUNSWICK 1290J**Birth Date: 1/30/21  
Reg. # 4465259

Category: 100% 1A



FEDDES SILVER BOW B226  
**FEDDES BRUNSWICK D202**  
 FEDDES LARKABU X21  
 GMRA TRILOGY 0226

**GMRA OPHELIA 409**  
 GMRA OPHELIA 279

BROWN JYJ REDEMPTION Y1334  
 FEDDES LAKINA Y17  
 FEDDES BIG SKY R9  
 FEDDES LARKABU 827  
 MESSMER PACKER S008  
 GMRA LAKOTA 625  
 LJC MISSION STATEMENT P27  
 GMRA OPHELIA 840

ProS	HB	GM
142	69	73
2%	19%	2%

BW	86
WW	538
WW-R	93
YW	1059
YW-R	100
IMF	2.83
REA	12.2
SC	34

CED	BW	WW	YW	ADG	DMI	M	ME	HPG	CEM	ST	MARB	YG	CW	REA	FAT
11	-0.5	73	126	0.33	1.98	29	16	11	6	21	0.58	-0.02	44	0.69	0.02
70%	75%	10%	4%	2%	94%	19%	98%	48%	70%	3%	16%	13%	3%	1%	66%

This bull is a nice cherry red with above average capacity and thickness and perfect feet and leg structure scores. Growth and carcass numbers are outstanding and all indices are in the top 22% or higher. His REA EPD is tied for #4 in the group. The dam comes from a long line of performance with generations of MPPA's from 100 up to 109 for almost 30 years.



Lot 82

81

**GMRA SPARTACUS 1252J**Birth Date: 1/20/21  
Reg. # 4465127

Category: 100% 1A

BIEBER ROUSE SAMURAI X22  
**BIEBER SPARTACUS A193**  
 BIEBER TILLY 233J  
 BIEBER GOLDBAR Y379

**GMRA ANGIE 501**  
 GMRA ANGIE 338

LCC CHEYENNE B221L  
 GHR MARITA R31  
 LCOC HIGH NOON A093R  
 BIEBER TILLY 7334  
 LACY GOLD BAR 8123  
 BASIN PRIMROSE 2043  
 BIEBER ROOSEVELT W384  
 GMRA ANGIE 889

ProS	HB	GM
74	50	24
75%	55%	77%

BW	62
WW	537
WW-R	93
YW	985
YW-R	93
IMF	2.66
REA	11.3
SC	34

CED	BW	WW	YW	ADG	DMI	M	ME	HPG	CEM	ST	MARB	YG	CW	REA	FAT
20	-7.2	53	84	0.19	1.61	30	10	9	11	16	0.38	0.12	21	0.12	0.05
1%	1%	74%	75%	74%	70%	13%	88%	80%	3%	38%	56%	83%	55%	50%	94%

This heifer bull maintains consistent performance. His number profile verifies that he is all about getting calves on the ground nice and easy. All calving ease numbers are in the top 1 or 2% of the breed. CED is tied for #2 in the group and he has the #2 BW EPD. He has a nice straight top line with a broad chest floor and has an eye pleasing phenotype with excellent marks for feet and leg structure.

82

**GMRA EXCELLENCE 1213J**Birth Date: 1/11/21  
Reg. # 4464989

Category: 100% 1A

LJC MERLIN 937Z  
**KCC EXCELLENCE 139-774**  
 139 1KCC  
 H2R PROFITBUILDER B403

**LGR ESTONIA 965G**  
 LGR ESTONIA 434

LJC MERLIN T179  
 TR CARRIE WT937  
 SCHULER ENVY 7342T  
 KCC MISS BV 2105-528  
 LSF TAKEOVER 9943W  
 BROWN MS P707 Y6674  
 GMRA MOUNTAIN 9287  
 LGR ESTONIA 212

ProS	HB	GM
111	71	40
18%	16%	42%

BW	57
WW	508
WW-R	93
YW	969
YW-R	94
IMF	3.04
REA	10.6
SC	37

CED	BW	WW	YW	ADG	DMI	M	ME	HPG	CEM	ST	MARB	YG	CW	REA	FAT
18	-6.9	50	87	0.23	1.25	29	-3	10	11	16	0.45	0.03	13	0.13	0.02
3%	1%	81%	70%	50%	34%	16%	21%	68%	3%	35%	39%	29%	84%	47%	57%

Here is a calving ease specialist that ranked above average on all phenotypic evaluations. An extremely well put together bull.

83

**GMRA EXCELLENCE 1270J**Birth Date: 1/24/21  
Reg. # 4465189

Category: 100% 1A



LJC MERLIN 937Z  
**KCC EXCELLENCE 139-774**  
 139 1KCC  
 BECKTON EPIC R397 K

**GMRA ESTONIA 793**  
 GMRA ESTONIA 346

LJC MERLIN T179  
 TR CARRIE WT937  
 SCHULER ENVY 7342T  
 KCC MISS BV 2105-528  
 BECKTON EPIC K F075  
 BECKTON KIT F468 JL  
 BIEBER ROOSEVELT W384  
 GMRA ESTONIA 9122

ProS	HB	GM
151	61	90
1%	32%	1%

BW	91
WW	565
WW-R	98
YW	1142
YW-R	108
IMF	3.34
REA	11.0
SC	36

CED	BW	WW	YW	ADG	DMI	M	ME	HPG	CEM	ST	MARB	YG	CW	REA	FAT
9	0.9	74	130	0.35	1.28	26	-2	16	3	15	0.56	0.00	48	0.46	0.00
93%	92%	8%	3%	1%	37%	45%	24%	2%	97%	54%	18%	19%	1%	4%	10%

This Excellence son hit the ground a bit heavier than his sire contemporaries, but he used it to his advantage. Growth excelled on through yearling and while on test, giving him an ADG and an ADG ratio that are both tied for #2 in the offering. 9 EPDs are in the top 9% with standouts in growth and carcass. He posts the #1 GM in the offering, his CW is #3, and his HPG is tied for #1 helping boost ProS to #5. This bull looks good from every angle, with a very broad top leading to abundant capacity and spring of rib, and a square rear quarter. There is also a great disposition on board.

84

**GMRA STOCKMARKET 1255J**Birth Date: 1/21/21  
Reg. # 4465137

Category: 100% 1A

PIE STOCKMAN 4051  
**BIEBER CL STOCKMARKET E119**  
 BIEBER CL ADELLE 475C  
 FEDDES BOBCAT A230

**GMRA NEXA 743**  
 LAUBACH NEXA 4098

LSF SAGA 1040Y  
 PIE LAKOTA 046  
 ANDRAS FUSION R236  
 BIEBER ADELLE 297Y  
 BECKTON EPIC R397 K  
 FEDDES LAKINA 91S  
 GMRA SECRET MISSION 8258  
 LAUBACH NEXA 8100

ProS	HB	GM
110	101	9
18%	1%	96%

BW	72
WW	542
WW-R	94
YW	941
YW-R	89
IMF	2.05
REA	11.4
SC	35

CED	BW	WW	YW	ADG	DMI	M	ME	HPG	CEM	ST	MARB	YG	CW	REA	FAT
16	-5.4	45	65	0.12	1.38	26	0	12	11	22	0.49	0.03	-1	0.07	0.04
8%	4%	91%	94%	95%	47%	43%	35%	26%	3%	1%	30%	31%	99%	62%	89%

Low birth with the #2 HB in the class and a Stay that is tied for #2.



### 85 GMRA SPARTACUS 1287J

Birth Date: 1/29/21 Reg. # 4465247 Category: 100% 1A

BIEBER ROUSE SAMURAI X22  
**BIEBER SPARTACUS A193**  
BIEBER TILLY 233U  
BIEBER ROOSEVELT W384

LCC CHEYENNE B221L  
GHR MARITA R31  
LLOC HIGH NOON A093R  
BIEBER TILLY 7334  
BIEBER ROUGH RIDER 10712  
BIEBER SHEBA 9602  
LJC MISSION STATEMENT P27  
GMRA OPHELIA 728

**GMRA OPHELIA 485**  
GMRA OPHELIA 164

ProS	HB	GM
87	47	40
53%	61%	42%

CED	BW	WW	YW	ADG	DMI	M	ME	HPG	CEM	ST	MARB	YG	CW	REA	FAT
10	0.4	72	104	0.20	1.78	26	3	10	6	15	0.55	-0.01	32	0.47	0.02
83%	87%	11%	32%	68%	83%	46%	51%	73%	75%	57%	20%	16%	17%	4%	54%

This good-dispositioned bull features extra length and thickness and perfect feet and leg evaluations along with a strong set of carcass numbers.

BW	85
WW	586
WW-R	102
YW	975
YW-R	92
IMF	1.95
REA	12.4
SC	34

### 86 GMRA GAME CHANGER 1223J

Birth Date: 1/14/21 Reg. # 4465027 Category: 100% 1A

H2R PROFITBUILDER B403  
**GMRA GAME CHANGER 8270F**  
GMRA PRIDSTOM 069

ANDRAS NEW DIRECTION R240  
**GMRA VENICE 858F**  
GMRA VENICE 427

LSF TAKEOVER 9943W  
BROWN MS P707 Y6674  
GMRA LARAMIE 5110  
GMRA PRIDSTOM 727  
ANDRAS IN FOCUS B152  
ANDRAS KURUBA B111  
GMRA TRILOGY 0226  
GMRA VENICE 733

ProS	HB	GM
143	76	67
1%	10%	5%

CED	BW	WW	YW	ADG	DMI	M	ME	HPG	CEM	ST	MARB	YG	CW	REA	FAT
17	-5.4	61	98	0.23	1.62	24	9	14	9	18	0.90	0.17	31	0.11	0.05
8%	4%	45%	46%	47%	70%	64%	85%	7%	9%	15%	1%	95%	20%	52%	94%

Calving ease and a strong number profile.

BW	67
WW	529
WW-R	92
YW	1040
YW-R	98
IMF	4.38
REA	9.6
SC	35

### 87 DDRA GAME CHANGER 131

Birth Date: 1/24/21 Reg. # 4461061 Category: 100% 1A

H2R PROFITBUILDER B403  
**GMRA GAME CHANGER 8270F**  
GMRA PRIDSTOM 069  
GMRA TRILOGY 0226

**GMRA ESTONIA 523**  
GMRA ESTONIA 617

LSF TAKEOVER 9943W  
BROWN MS P707 Y6674  
GMRA LARAMIE 5110  
GMRA PRIDSTOM 727  
MESSMER PACKER S008  
GMRA LAKOTA 625  
LCHMN RED SPREAD 1271F  
BJR ESTONIA 9S-1210

ProS	HB	GM
131	83	47
4%	5%	25%

CED	BW	WW	YW	ADG	DMI	M	ME	HPG	CEM	ST	MARB	YG	CW	REA	FAT
13	-3.4	63	98	0.22	1.41	25	6	13	8	20	0.65	0.05	20	0.27	0.04
42%	21%	38%	44%	53%	49%	56%	68%	13%	33%	6%	9%	43%	60%	20%	88%

This Game Changer son received perfect marks on all feet and leg structure scores.

BW	82
WW	554
WW-R	92
YW	999
YW-R	95
IMF	3.29
REA	11.0
SC	34

### 88 GMRA GAME CHANGER 1324J

Birth Date: 3/5/21 Reg. # 4465365 Category: 100% 1A

H2R PROFITBUILDER B403  
**GMRA GAME CHANGER 8270F**  
GMRA PRIDSTOM 069  
GMRA TRILOGY 0226

**GMRA VENICE 427**  
GMRA VENICE 733

LSF TAKEOVER 9943W  
BROWN MS P707 Y6674  
GMRA LARAMIE 5110  
GMRA PRIDSTOM 727  
MESSMER PACKER S008  
GMRA LAKOTA 625  
BROWN VACATION H7106  
GMRA VENICE 231

ProS	HB	GM
82	41	41
62%	73%	39%

CED	BW	WW	YW	ADG	DMI	M	ME	HPG	CEM	ST	MARB	YG	CW	REA	FAT
8	-0.7	68	104	0.22	1.68	26	18	12	5	17	0.60	0.07	25	0.24	0.03
96%	71%	19%	32%	52%	76%	39%	99%	34%	85%	32%	13%	52%	40%	24%	79%

Here is a nice structure with ideal marks for all feet and leg scores.

BW	95
WW	610
WW-R	106
YW	1024
YW-R	97
IMF	2.59
REA	11.7
SC	37



Gallatin Cattle Women

### 89 GMRA DOMAIN 1266J

Birth Date: 1/24/21 Reg. # 4465181 Category: 100% 1A

BECKTON DOMINOR T122 Z1  
**3SCC DOMAIN A163**  
3SCC EUCLA X723  
H2R PROFITBUILDER B403

**GMRA NEXA 708**  
GMRA NEXA 579

BECKTON DOMINOR Z1 R610  
BKT LARKABEL R038 WA  
BASIN HOBO 0545  
BSKF EUCLA U278  
LSF TAKEOVER 9943W  
BROWN MS P707 Y6674  
GMRA PEACEMAKER 1216  
GMRA NEXA 672

ProS	HB	GM
120	58	62
9%	38%	8%

CED	BW	WW	YW	ADG	DMI	M	ME	HPG	CEM	ST	MARB	YG	CW	REA	FAT
13	0.0	67	115	0.30	1.55	26	0	15	6	14	0.52	0.16	38	0.17	0.04
48%	82%	24%	13%	7%	64%	44%	34%	4%	72%	65%	25%	93%	7%	38%	88%

Here is a high-growth number set with a top-notch marbling and a HPG this tied for #3 in the class. The performance-minded maternal lineage features MPPAs all the way up to 106.

BW	85
WW	544
WW-R	94
YW	1041
YW-R	98
IMF	3.56
REA	10.2
SC	36



## 90 DDRA REBEL 128

Birth Date:  
1/22/21Reg. #  
4461077Category:  
100% 1ASUTH UNION 05C  
DDRA REBEL 915  
DDRA VENICE 4003GMRA SECRET MISSION 8258  
DDRA DAZZLE 1009  
DKK DAZZLE R71ANDRAS FUSION R236  
SUTH EPIC XENA 3084  
GMRA PEACEMAKER 1216  
DDRA VENICE 2003  
LJC MISSION STATEMENT P27  
GMRA LAKOTA 341  
DKK WESTERN LIMIT M19  
DKK DAZZLE N18

ProS HB GM

101 61 40

29% 32% 42%

CED	BW	WW	YW	ADG	DMI	M	ME	HPG	CEM	ST	MARB	YG	CW	REA	FAT
13	-2.0	61	101	0.25	1.77	25	9	13	8	17	0.47	0.06	24	0.17	0.02

51%	46%	45%	38%	30%	83%	47%	86%	19%	32%	31%	34%	48%	45%	38%	59%
-----	-----	-----	-----	-----	-----	-----	-----	-----	-----	-----	-----	-----	-----	-----	-----

Look for extra capacity and thickness on this Rebel son.



Lot 92

## 91 GMRA SPARTACUS 1300J

Birth Date:  
2/3/21Reg. #  
4465293Category:  
100% 1ABIEBER ROUSE SAMURAI X22  
BIEBER SPARTACUS A193  
BIEBER TILLY 233UBECKTON EPIC R397 K  
LGR ESTONIA 741E  
LGR ESTONIA 419LCC CHEYENNE B221L  
GHR MARITA R31  
LCOC HIGH NOON A093R  
BIEBER TILLY 7334  
BECKTON EPIC K F075  
BECKTON KIT F468 JL  
GMRA TRILOGY 0226  
LGR ESTONIA 092

ProS HB GM

83 41 42

60% 74% 37%

CED	BW	WW	YW	ADG	DMI	M	ME	HPG	CEM	ST	MARB	YG	CW	REA	FAT
15	-3.7	63	101	0.23	1.51	26	8	9	10	14	0.62	0.22	24	-0.13	0.05

15%	17%	36%	39%	45%	60%	41%	81%	83%	6%	72%	11%	99%	43%	94%	94%
-----	-----	-----	-----	-----	-----	-----	-----	-----	----	-----	-----	-----	-----	-----	-----

Get them on the ground with ease! Low birth is the name of the game with a number profile to match, including a high-end marbling.

## 92 GMRA HEAVILY ARMED 1317J

Birth Date:  
2/18/21Reg. #  
4465337Category:  
100% 1ABOW CRK HEAVILY ARMED 310A  
BIEBER HEAVILY ARMED E392  
BIEBER RED BEVERLY 139BHXC DECLARATION 5504C  
GMRA ESTONIA 810F  
GMRA ESTONIA 628BUF CRK THE RIGHT KIND U199  
TWIN PONDS HI-RB-LS 408  
BIEBER H HUGHES W109  
BIEBER RED BEVERLY 234Z  
LEACHMAN PLEDGE A282Z  
HXC190Y  
GMRA STETSON 2240  
GMRA ESTONIA 415

ProS HB GM

64 25 39

88% 93% 45%

CED	BW	WW	YW	ADG	DMI	M	ME	HPG	CEM	ST	MARB	YG	CW	REA	FAT
9	0.9	77	128	0.31	2.05	25	12	7	6	13	0.30	0.05	39	0.23	0.00

91%	92%	4%	3%	4%	96%	56%	93%	96%	62%	75%	79%	42%	6%	26%	16%
-----	-----	----	----	----	-----	-----	-----	-----	-----	-----	-----	-----	----	-----	-----

There is a powerful phenotype here with great capacity and spring of rib. He is square from the back with a deep rear quarter. Feet and legs all received ideal marks. The number profile accurately indicates growth and power.

## 93 GMRA GAME CHANGER 1251J

Birth Date:  
1/20/21Reg. #  
4465125Category:  
100% 1AH2R PROFITBUILDER B403  
GMRA GAME CHANGER 8270F  
GMRA PRIDSTOM 069BIEBER GOLDBAR Y379  
GMRA FIREFLY 4107  
GMRA FIREFLY 945LSF TAKEOVER 9943W  
BROWN MS P707 Y6674  
GMRA LARAMIE 5110  
GMRA PRIDSTOM 727  
LACY GOLD BAR 8123  
BASIN PRIMROSE 2043  
GMRA LARAMIE 5110  
GMRA FIREFLY 428

ProS HB GM

107 77 31

22% 10% 64%

CED	BW	WW	YW	ADG	DMI	M	ME	HPG	CEM	ST	MARB	YG	CW	REA	FAT
15	-1.7	74	115	0.25	1.57	27	4	11	8	18	0.37	-0.03	23	0.47	0.02

20%	52%	8%	14%	30%	66%	36%	56%	44%	29%	13%	60%	10%	48%	4%	66%
-----	-----	----	-----	-----	-----	-----	-----	-----	-----	-----	-----	-----	-----	----	-----

A nice REA scan backs up a REA EPD in the top 4% of the breed.

## 94 GMRA STOCKMARKET 1276J

Birth Date:  
1/27/21Reg. #  
4465217Category:  
100% 1APIE STOCKMAN 4051  
BIEBER CL STOCKMARKET E119  
BIEBER CL ADELLE 475CVGW NORTHERN CANYON 5109  
GMRA FIREFLY 189  
GMRA FIREFLY 128LSF SAGA 1040Y  
PIE LAKOTA 046  
ANDRAS FUSION R236  
BIEBER ADELLE 297Y  
GEFB NORTHERN CANYON 2328  
VGW PT YUMA 0278  
LARSON RED LIGHTNING  
GMRA FIREFLY 828

ProS HB GM

129 88 41

5% 3% 39%

CED	BW	WW	YW	ADG	DMI	M	ME	HPG	CEM	ST	MARB	YG	CW	REA	FAT
22	-7.5	47	79	0.20	1.48	27	-1	8	14	20	0.83	0.12	3	0.00	0.06

1%	1%	88%	82%	69%	57%	30%	28%	94%	1%	5%	1%	78%	98%	77%	99%
----	----	-----	-----	-----	-----	-----	-----	-----	----	----	----	-----	-----	-----	-----

This bull is out of a very mature, consistent performer here at GMRA. She has an average birth ratio of 90 on 10 calves and this bull turned in a 66 BW ratio with the 2nd lowest birth weight in the offering. After birth his dam dropped off so he was grafted to a younger cow, which is why he posts no ratios. Numbers tell the tale with breed-leading ProS and HB. Birth EPDs are in the top 1% with BW, CED and CEM at #1 in the class. A high ranking Stay and Marbling round out the set. He is built right with a narrow head and shoulders and features a nice, calm disposition.



### 95

#### DDRA REBEL 122

Birth Date: 1/17/21  
Reg. # 4461125

Category: 100% 1A

SUTH UNION 05C  
**DDRA REBEL 915**  
DDRA VENICE 4003  
FEDDES BRUNSWICK D202  
**DDRA DAZZLE 8004**  
DDRA DAZZLE 5001

ANDRAS FUSION R236  
SUTH EPIC XENA 3084  
GMRA PEACEMAKER 1216  
DDRA VENICE 2003  
FEDDES SILVER BOW B226  
FEDDES LARKABU X21  
GMRA MINOTAURO 3104  
DKK DAZZLE R71

ProS	HB	GM
120	75	45
10%	12%	31%

CED	BW	WW	YW	ADG	DMI	M	ME	HPG	CEM	ST	MARB	YG	CW	REA	FAT
15	-0.9	63	108	0.28	1.91	29	9	12	10	18	0.49	-0.01	22	0.25	0.01
19%	67%	37%	24%	13%	91%	19%	84%	35%	7%	13%	30%	16%	53%	23%	26%

From personal performance to his EPD profile this is a solid, moderate built bull. He has 15 EPDs in the top 50% of the breed or better. 122 is structurally correct and clean made receiving high marks during GMRA's in-house evaluations.

BW	76
WW	559
WW-R	93
YW	1006
YW-R	96
IMF	2.44
REA	11.7
SC	36

### 96

#### GMRA GAME CHANGER 1281J

Birth Date: 1/28/21  
Reg. # 4465231

Category: 100% 1A

H2R PROFITBUILDER B403  
**GMRA GAME CHANGER 8270F**  
GMRA PRIDSTOM 069  
4L ADVANCE VISION R15P  
**GMRA FIREFLY 740**  
GMRA FIREFLY 128

LSF TAKEOVER 9943W  
BROWN MS P707 Y6674  
GMRA LARAMIE 5110  
GMRA PRIDSTOM 727  
4L SUPER VISION R2292  
4L MS ADVANCER R16L  
LARSON RED LIGHTNING  
GMRA FIREFLY 828

ProS	HB	GM
74	39	35
75%	77%	53%

CED	BW	WW	YW	ADG	DMI	M	ME	HPG	CEM	ST	MARB	YG	CW	REA	FAT
10	0.1	58	93	0.22	1.30	27	9	9	5	16	0.48	0.01	13	0.05	0.00
87%	84%	56%	56%	54%	39%	32%	85%	88%	86%	36%	32%	23%	85%	66%	23%

There is a masculine look to this dark cherry red bull with a 108 ADG ratio.

BW	85
WW	517
WW-R	90
YW	1043
YW-R	99
IMF	2.06
REA	11.4
SC	36



### 97

#### GMRA EXCELLENCE 1250J

Birth Date: 1/20/21  
Reg. # 4465123

Category: 100% 1A

LJC MERLIN 937Z  
**KCC EXCELLENCE 139-774**  
139 1KCC  
GMRA TESLA 6214  
**GMRA PRIDSTOM 863F**  
GMRA PRIDSTOM 982

LJC MERLIN T179  
TR CARRIE WT937  
SCHULER ENVY 7342T  
KCC MISS BV 2105-528  
GMRA TRILOGY 0226  
GMRA ANGIE ROSE 448  
BROWN COMMITMENT S7206  
GMRA PRIDSTOM 035

ProS	HB	GM
116	73	43
13%	14%	34%

CED	BW	WW	YW	ADG	DMI	M	ME	HPG	CEM	ST	MARB	YG	CW	REA	FAT
14	-4.8	56	88	0.20	1.40	29	3	10	9	18	0.67	-0.03	10	0.18	0.01
27%	7%	64%	66%	68%	49%	14%	49%	68%	11%	16%	7%	11%	89%	37%	31%

When this bull was born, he decided to be a 'Free Agent.' He really was independent with no loyalty to his dam, thus no ratios. He hits the mark as a heifer bull and comes from a maternal pedigree full of MPPAs over 100.

BW	75
WW	511
WW-R	
YW	949
YW-R	
IMF	2.44
REA	9.7
SC	33



Lot 98

### 98

#### GMRA DOMAIN 1309J

Birth Date: 2/10/21  
Reg. # 4465311

Category: 100% 1A

BECKTON DOMINOR T122 Z1  
**3SCC DOMAIN A163**  
3SCC EUCLA X723  
HXC DECLARATION 5504C  
**GMRA MESA MAID 816F**  
GMRA MESA MAID 453

BECKTON DOMINOR Z1 R610  
BKT LARKABEL R038 WA  
BASIN HOB0 0545  
BSKF EUCLA U278  
LEACHMAN PLEDGE A282Z  
HXC190Y  
BIEBER GOLDBAR Y379  
GMRA MESA MAID 799

ProS	HB	GM
136	77	59
3%	10%	10%

CED	BW	WW	YW	ADG	DMI	M	ME	HPG	CEM	ST	MARB	YG	CW	REA	FAT
12	-0.3	72	121	0.30	1.59	20	2	12	5	19	0.69	0.21	30	-0.15	0.03
60%	78%	11%	8%	7%	67%	90%	42%	27%	85%	7%	6%	98%	22%	95%	76%

This bull turned in an outstanding marbling scan with the #2 IMF ratio and the #3 measurement. He also has ideal marks for foot and leg scores.

BW	87
WW	543
WW-R	94
YW	1064
YW-R	101
IMF	4.82
REA	8.9
SC	36



## 99 GMRA GAME CHANGER 1264J

Birth Date: 1/24/21  
Reg. # 4465177

Category: 100% 1A



H2R PROFITBUILDER B403  
**GMRA GAME CHANGER 8270F**  
GMRA PRIDSTOM 069

GMRA TRINITY 5222  
**GMRA OPHELIA 7107**  
GMRA OPHELIA 317

LSF TAKEOVER 9943W  
BROWN MS P707 Y6674  
GMRA LARAMIE 5110  
GMRA PRIDSTOM 727  
GMRA TRILOGY 0226  
GMRA INDIGO 615  
HXC CONQUEST 4405P  
GMRA OPHELIA 164

ProS	HB	GM
83	35	48
60%	83%	24%

BW	92
WW	525
WW-R	91
YW	1011
YW-R	96
IMF	2.39
REA	10.3
SC	34

CED	BW	WW	YW	ADG	DMI	M	ME	HPG	CEM	ST	MARB	YG	CW	REA	FAT
11	0.0	82	138	0.35	1.66	28	12	15	6	11	0.29	-0.01	37	0.46	0.01

77% 82% 2% 1% 1% 74% 22% 93% 3% 64% 89% 80% 16% 9% 4% 35%  
This bull's number profile features powerful growth with a big REA and a HPG that is tied for #3 in the group. The maternal pedigree is solid with MPPAs 100 or higher, all the way up to 109.

## 100 GMRA GAME CHANGER 1288J

Birth Date: 1/30/21  
Reg. # 4465255

Category: 100% 1A



H2R PROFITBUILDER B403  
**GMRA GAME CHANGER 8270F**  
GMRA PRIDSTOM 069

BIEBER FAF ROLLIN DEEP B627  
**GMRA PEACHA 801F**  
GMRA PEACHA 205

LSF TAKEOVER 9943W  
BROWN MS P707 Y6674  
GMRA LARAMIE 5110  
GMRA PRIDSTOM 727  
BIEBER ROLLIN DEEP Y118  
BIEBER ADELLE 8958  
HXC CONQUEST 4405P  
GMRA PEACHA 013

ProS	HB	GM
130	47	83
4%	61%	1%

BW	81
WW	519
WW-R	90
YW	986
YW-R	93
IMF	3.82
REA	9.1
SC	35

CED	BW	WW	YW	ADG	DMI	M	ME	HPG	CEM	ST	MARB	YG	CW	REA	FAT
11	-1.3	74	127	0.33	1.58	28	14	14	8	14	0.77	0.17	45	0.14	0.03

72% 60% 8% 4% 2% 67% 22% 96% 8% 35% 68% 3% 95% 2% 45% 73%  
There's a great set of feet and legs on this more moderate framed Game Changer. Numbers are strong with high growth and a good marbling with a GM that is tied for #3 in the group.



Lot 101

## 101 GMRA BRUNSWICK 1218J

Birth Date: 1/13/21  
Reg. # 4465013

Category: 100% 1A



FEDDES SILVER BOW B226  
**FEDDES BRUNSWICK D202**  
FEDDES LARKABU X21

H2R PROFITBUILDER B403  
**LGR ESTONIA 887F**  
LGR ESTONIA 212

BROWN JYJ REDEMPTION Y1334  
FEDDES LAKINA Y17  
FEDDES BIG SKY R9  
FEDDES LARKABU 827  
LSF TAKEOVER 9943W  
BROWN MS P707 Y6674  
MESSMER PACKER S008  
LGR ESTONIA 027

ProS	HB	GM
164	85	79
1%	4%	1%

BW	71
WW	528
WW-R	92
YW	1040
YW-R	98
IMF	3.21
REA	11.3
SC	33

CED	BW	WW	YW	ADG	DMI	M	ME	HPG	CEM	ST	MARB	YG	CW	REA	FAT
11	-2.8	73	123	0.31	1.78	23	5	14	8	19	0.72	0.02	43	0.66	0.04

70% 31% 9% 6% 5% 84% 73% 62% 12% 29% 10% 4% 25% 3% 1% 85%  
This Brunswick son is built right, with a small head and narrow shoulder that flows through to abundant capacity and a nice, thick rear quarter. His carcass numbers are outstanding with single digit percentile growth, and still has a BW EPD in the top 1/3 of the breed and a ProS tied for #1 in the offering.



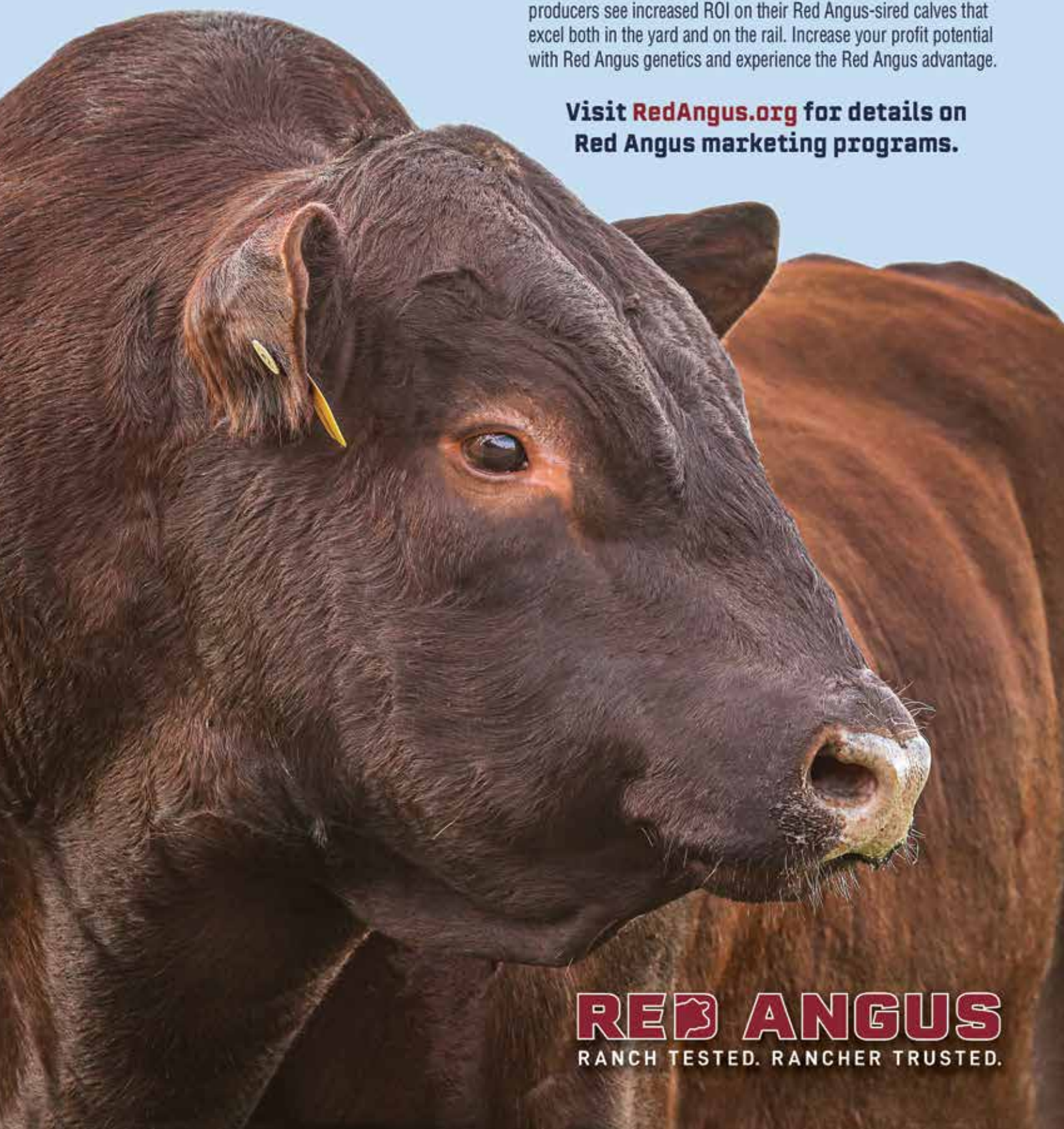


# PROFIT. REPEAT.

**Generate repeated profits with Red Angus bulls.**

Year after year, despite unpredictable market conditions, cattle producers see increased ROI on their Red Angus-sired calves that excel both in the yard and on the rail. Increase your profit potential with Red Angus genetics and experience the Red Angus advantage.

**Visit [RedAngus.org](http://RedAngus.org) for details on Red Angus marketing programs.**



**RED ANGUS**  
RANCH TESTED. RANCHER TRUSTED.



**REFERENCE SIRES**

Below each reference sire is their name and registration #.

To find more information on each bull go to [www.redangus.org](http://www.redangus.org), click on the DATA SEARCHES & TOOLS tab and go to sub-category 'Animal Search.'



**GMRA GAME CHANGER 8270F**  
#3941443



**FEDDES BRUNSWICK D202**  
#3539689



**BIEBER CL STOCKMARKET E119**  
#3751659



**KCC EXCELLENCE 139-774**  
#3774413



**3SCC DOMAIN A163**  
#1619642



**BIEBER SPARTACUS A193**  
#1617230



**GMRA TESLA 6214**  
#3538390



**DDRA REBEL 915**  
#4127156



**BIEBER HEAVILY ARMED E392**  
#3752457



**HXC DECLARATION 5504C**  
#3494198

**SUTH TRANSPORTER 60G**  
#4128290





**Bob & Julie Morton**

2431 Logan Trident Road • Three Forks, MT 59752  
(406) 580-0348 • [www.gmracattle.com](http://www.gmracattle.com)

FIRST CLASS  
US POSTAGE  
PAID  
UNITED PRINTING

**TIME-DATED MATERIAL  
DO NOT DELAY!**

CHANGE SERVICE REQUESTED

